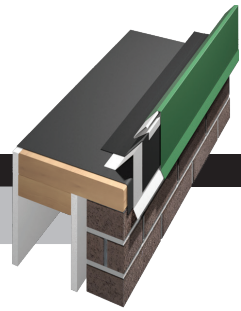




# 2-Piece Snap-On Compression

## Single-Ply Application, Snap-On Version



### PRODUCT DATA SHEET

#### DESCRIPTION

2-Piece Snap-On Compression features a snap-on cover that eliminates crimping, substantially reducing installation time on single-ply roofs. Dual attachment points on both the face and roof deck allow for added flexibility when accommodating roof irregularities. With no exposed fasteners and no unsightly cover plates, 2-Piece Snap-On Compression will complement the buildings aesthetics, while also being fast and easy to install.

#### PRODUCT HIGHLIGHTS

- ANSI/SPRI/FM 4435/ES-1 Tested
- FM Approved for Wind Uplift Protection
- Miami-Dade County Approved
- Variety of Colors, Sizes, and Materials
- Dual Attachment Points = Added Flexibility

#### STANDARD COVER MATERIALS

- 24 ga. Steel
- 22 ga. Steel
- .040" Aluminum
- .050" Aluminum
- .063" Aluminum

#### STANDARD SIZES

- 5.25", 6.75", 8.25", 9.75", 11.25", 12.75"

#### COLORS

Choose from over 30 colors and finishes that meet your job requirements. Finish Warranty is available depending on color selection. See color chart for color and warranty availability.

#### EFFICIENT DESIGN

- Provided in 12'-0" lengths.
- Slotted fastening holes in the galvanized waterdam to allow for proper thermal movement of the materials and to ensure correct fastener placement and spacing.
- Snap-on cover design provides quicker installations and lower labor costs.
- Spring clips are placed 4' o.c. to provide for more positive attachment ensuring extra stability for the system.

#### ACCESSORIES

Factory fabricated miters and accessories provide a cleaner, more aesthetically pleasing appearance. This eliminates the need for field fabrication, providing time and labor savings.

**NOTE: FM APPROVAL AND MIAMI-DADE APPROVAL WILL NOT BE AVAILABLE AT INITIAL LAUNCH. APPLICATIONS PENDING.**

#### INCLUDED COMPONENTS

- Fascia Cover
- 24 ga. Steel Canted Waterdam Cleat
- Stainless Steel Cleat Springs
- Concealed Cover Splice Plate
- All fasteners will arrive to the job site with the product

#### CUSTOM CAPABILITIES

Radius is available to meet the unique needs of each project.

#### TESTING

- Tested per ANSI/SPRI/FM 4435/ES-1 Standard to comply with the International Building Code.
- Factory Mutual approved for wind uplift protection.
- Miami-Dade Approved to comply with the High Velocity Hurricane Zone of the Florida Building Code.

#### ADDITIONAL INFORMATION

The information given on this PDS is subject to change without notice. Always check the Mule-Hide website at [www.mulehide.com](http://www.mulehide.com) for the latest information, changes and updates or contact Mule-Hide Products Company at 800-786-1492.

#### DISCLAIMER

The statements provided concerning the material shown are intended as a guide for material usage and are believed to be true and accurate at the time of printing. No statement made by anyone may supersede this information, except when done in writing by Mule-Hide Products Co., Inc. Since the manner of use is beyond our control, Mule-Hide does not authorize anyone to make any warranty of merchantability or fitness for any particular purpose or any other warranty, guarantee or representation, expressed or implied, concerning this material. This product may be eligible for a Mule-Hide warranty, please check the Mule-Hide website at [www.mulehide.com](http://www.mulehide.com) or contact Mule-Hide directly at 800-786-1492 for details. Buyer and user accept the product under these conditions and assume the risk of any failure, any injury person or property (including that of the user), loss or liability resulting from the handling, storage or use of the product whether or not it is handled, stored or used in accordance with the directions or specifications. Mule-Hide must be notified in writing of any claims and be given the opportunity to inspect the alleged failure before repairs are made