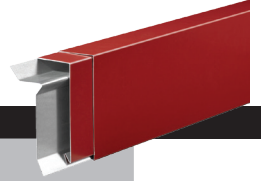




EclipseEdge

Fully Adhered or Mechanically Attached Single-Ply



PRODUCT DATA SHEET



NOTE: FM APPROVAL AND MIAMI-DADE APPROVAL WILL NOT BE AVAILABLE AT INITIAL LAUNCH. APPLICATIONS PENDING.

STANDARD SIZES

- 3.5"
- 4.75"
- 6.25"
- 7.75"
- 9.25"
- 10.75"
- 12.25"

COLORS

Choose from over 30 colors and finishes that meet your job requirements. Finish Warranty is available depending on color selection. See color chart for color and warranty availability.

EFFICIENT DESIGN

- Provided in 12'-0" lengths with pre-punched holes for quicker installation and lower labor costs.
- Concealed splice plates allow for thermal movement of materials and provides a watertight seal at all joints.
- Slotted fastening holes allow for thermal movement of the materials and ensure correct fastener placement and spacing.
- Snap-on cover with no exposed fasteners, eliminates any strip-in or heat welding.

ACCESSORIES

Factory fabricated accessories provide a cleaner, more aesthetically pleasing appearance. This eliminates the need for field fabrication, providing time and labor savings.

INCLUDED COMPONENTS

- Fascia Cover
- 20 ga. Steel Cleat
- Concealed Splice Plate
- All fasteners will arrive to the job site with the product

CUSTOM CAPABILITIES

Radius is available to meet the unique needs of each project.

DESCRIPTION

EclipseEdge is Mule-Hide's three-piece snap-on fascia for single-ply applications. This product provides superior protection from wind and water penetration with economical pricing to maximize your profits. Our fast lead times and easy installation translate directly into decreased labor costs and enable you to move on to other projects more quickly.

PRODUCT HIGHLIGHTS

- ANSI/SPRI/FM 4435/ES-1 Tested
- FM Approved for Wind Uplift Protection
- Miami-Dade County Approved
- Variety of Colors, Sizes, and Materials
- Easy Install = Decreased Labor Costs
- No Strip-in or Heat Welding Required

STANDARD COVER MATERIALS*

- 24 ga. Steel
- 22 ga. Steel
- .040" Aluminum
- .050" Aluminum



EclipseEdge

Fully Adhered or Mechanically Attached Single-Ply

PRODUCT DATA SHEET

TESTING**

- Tested per ANSI/SPRI/FM 4435/ES-1 Standard to comply with the International Building Code.
- Factory Mutual approved for wind uplift protection.
- Miami-Dade Approved to comply with the High Velocity Hurricane Zone of the Florida Building Code.

ADDITIONAL INFORMATION

The information given on this PDS is subject to change without notice. Always check the Mule-Hide website at www.mulehide.com for the latest information, changes and updates or contact Mule-Hide Products Company at 800-786-1492.

*Max tested 9.25" face height

**3.5" face height only available in 24 ga. galvanized steel and .040" aluminum. Face heights 9.25" and over only available in 22 ga. galvanized steel or .050" and .063" aluminum to help prevent oil canning.

DISCLAIMER

The statements provided concerning the material shown are intended as a guide for material usage and are believed to be true and accurate at the time of printing. No statement made by anyone may supersede this information, except when done in writing by Mule-Hide Products Co., Inc. Since the manner of use is beyond our control, Mule-Hide does not authorize anyone to make any warranty of merchantability or fitness for any particular purpose or any other warranty, guarantee or representation, expressed or implied, concerning this material. This product may be eligible for a Mule-Hide warranty, please check the Mule-Hide website at www.mulehide.com or contact Mule-Hide directly at 800-786-1492 for details. Buyer and user accept the product under these conditions and assume the risk of any failure, any injury person or property (including that of the user), loss or liability resulting from the handling, storage or use of the product whether or not it is handled, stored or used in accordance with the directions or specifications. Mule-Hide must be notified in writing of any claims and be given the opportunity to inspect the alleged failure before repairs are made.