



LWG 3” METAL PLATES

PRODUCT DESCRIPTION

Revision Date: April 2020

Mule-Hide’s LWG 3” Metal Plates are used to mechanically attach insulation, cover boards and base sheets to lightweight insulating concrete (LWIC) and gypsum decks. The LWG 3” Metal Plate is a circular design with one center fastener placement hole and eight equally spaced fastener placement holes around the perimeter of the plate allowing for maximum versatility. Required pullout values can be achieved by installing multiple LWG Fasteners in one LWG 3” Metal Plate.

APPROPRIATE ACCESSORIES

LWG 3” Metal Plates are designed to be used with LWG Fasteners.



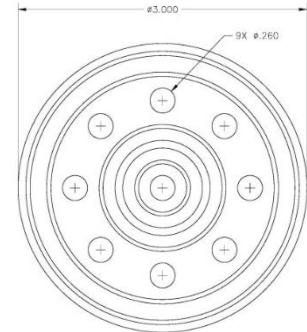
MATERIAL SPECIFICATIONS

LEED® Eligible Recycle Content: 20%

PRODUCT SELECTION

Properties*	Values
Thickness	0.017”
Diameter	3”
Hold Diameter	0.260”
Coating	AZ-50 Galvalume

*The performance specifications published in this Mule-Hide Product Data Sheet are based on controlled laboratory tests and are intended as a guideline only. They are not guaranteed in any way by Mule-Hide Products Co., Inc. or its supplier, since the building design, engineering and construction (including workmanship and materials) are beyond our control.



PACKAGING

1,000 per bucket. Weight is 34 lbs per bucket.

INSTALLATION

LWG 3” Metal Plates are designed for use with LWG Fasteners. Project specific pull tests are required. Depending on pullout values, more than one LWG Fastener may be required to achieve the desired minimum pullout resistance. Multiple fasteners may be installed in the LWG 3” Metal Plate increasing the amount of force required to pull the plate/fastener assembly out of the approved deck. Approved fastener patterns are available in detail MHU-LWG-1. Contact Mule-Hide Technical Department for additional assistance.

PROTECTION & SAFETY

Mule-Hide maintains Safety Data Sheets on all of its non-exempt products. Safety Data Sheets contain health and safety information for your development of appropriate product handling procedures to protect your employees and customers. Mule-Hide’s Safety Data Sheets should be read and understood by all of your supervisory personnel and employees before using Mule-Hide products in your facilities.

ADDITIONAL INFORMATION

The information given on this PDS is subject to change without notice. Always check the Mule-Hide website at www.mulehide.com for the latest information, changes and updates or contact Mule-Hide Products Company at 800-786-1492.

LWG 3" Metal Plates

DISCLAIMER

The statements provided concerning the material shown are intended as a guide for material usage and are believed to be true and accurate at the time of printing. No statement made by anyone may supersede this information, except when done in writing by Mule-Hide Products Co., Inc. Since the manner of use is beyond our control, Mule-Hide does not authorize anyone to make any warranty of merchantability or fitness for any particular purpose or any other warranty, guarantee or representation, expressed or implied, concerning this material. This product may be eligible for a Mule-Hide warranty, please check the Mule-Hide website at www.mulehide.com or contact Mule-Hide directly at 800-786-1492 for details. Buyer and user accept the product under these conditions and assume the risk of any failure, any injury person or property (including that of the user), loss or liability resulting from the handling, storage or use of the product whether or not it is handled, stored or used in accordance with the directions or specifications. Mule-Hide must be notified in writing of any claims and be given the opportunity to inspect the alleged failure before repairs are made.