

ShapeShift® Pitch Pans

Corners and Straights



The Right Choice for Low-Slope Roofing Products

800-786-1492 • mulehide.com

Rugged • Time-Tested • Weather-Tested

ShapeShift Pitch Pans

ShapeShift pitch pans consist of straight and corner sections which snap together to create an endless number of pitch pan sizes to seal around roof projections. The radius corner pieces measure approximately 2" x 2". The straight sections measure approximately 3" long. The high-strength polymer pieces have a 2-1/2" base flange with a 1-3/4" high side. The pieces snap together with interlocking joints. The smallest pitch pan available is 4" x 4" (4 corner pieces). The maximum size is unlimited.

ShapeShift pitch pans can be used vertically with JTS 1 as a filler and horizontally with MP Liquid Sealant as a filler.

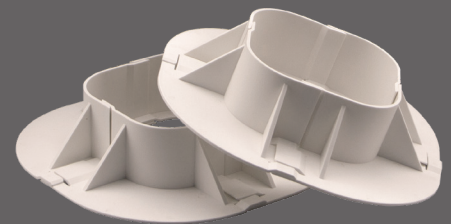
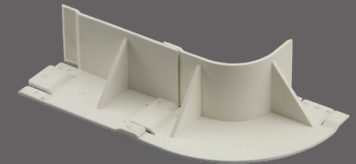
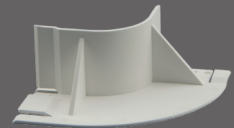
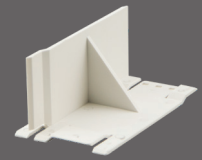
MP Liquid Sealant - Semi Self-Leveling

A 100% solids, non-shrink, one-part polyurethane pourable sealer seals:

- Metal roof seams and fasteners
- Gutters
- Damaged polyurethane foam
- Roof projections on PVC, EPDM, primed TPO, primed Mod Bit and primed BUR roofing systems

Installation Instructions

- Clean the membrane with appropriate cleaner (*new and in-service EPDM/TPO/PVC use Low-VOC Membrane Cleaner, in-service EPDM/TPO use Weathered Membrane Cleaner, metal/acrylic/silicone use 115 Cleaner*)
- Prime surface as required (*TPO uses Si TPO Primer*)
- To construct the pitch pan, snap necessary corners and straights together to desired size and shape
- Ensure there is at least 1" clearance between all projections, and between the projections and the wall of the pitch pan
- Apply three beads of JTS 1 sealant on the underside of the flange and firmly set the ShapeShift pitch pan on roof surface. **For vertical surfaces**, fasten pitch pan with appropriate fasteners through the holes provided on the inside flange. Fastener spacing is 6" on center.
- Apply a bead of JTS 1 around the outside edge of the pan flange
- Fill pitch pan with MP Liquid Sealant, crowning the top to shed water. **For vertical surfaces**, fill pitch pan with JTS 1 and level to the top of the pan wall. Ensure there are no gaps or openings in the sealant around or between the projections.



Packaging:

- Straights - 16/carton
- Corners - 16 and 48/carton

ShapeShift® Pitch Pans

Corners and Straights



Frequently Asked Questions

Are the pitch pan pieces available in other colors?

No. Pitch pan pieces are manufactured from a white high-strength polymer.

Is this product approved on Mule-Hide warranted systems?

Yes, Mule-Hide warrants the use of ShapeShift pitch pans in all system warranties when properly installed.

Is it necessary to prime the membrane before installation?

ShapeShift pitch pans only require priming on certain surfaces to ensure proper adhesion of the pan itself. Si TPO Primer is required on TPO membranes. There is no need to use primer with ShapeShift pans when installed over EPDM, PVC or metal surfaces.

Do I have to prime inside surfaces of the pitch pan before filling?

No primer is required on the inside surfaces of the pitch pan prior to applying MP Liquid Sealant.

Is there an outside corner piece to make an “L” shaped pan?

No, not at this time. Although it can be made in any size, the pans must either be a square or a rectangle.

What colors is MP Liquid Sealant offered in?

MP Liquid Sealant is available in white or black in 12 oz. sausage tubes. (20/per 3.5-Gallon pail).

Can ShapeShift really be installed on a wall?

Absolutely, and it's approved for use on MHP system warranties. When filled with JTS 1 sealant, ShapeShift pitch pans provide an excellent way to flash those troublesome cables or conduits that penetrate parapet walls when a pre-fabricated pipe boot or split pipe boot will not work.

Are extra pieces available?

Cartons are available in straights and corners. A carton of straights contains 16 pieces. A carton of corners contains 16 or 48 pieces.

Will ShapeShift pitch pans work with Black One-Part Pourable Sealer?

Yes, Black One-Part Pourable Sealer may be used instead of MP Liquid Sealant on horizontal installations using EPDM. Primer is not needed inside of the Shapeshift pitch pan prior to filling.



Horizontal installation with MP Liquid Sealant



Vertical installation with JTS 1

Item Number	Description	Gross Weight (lbs)	Units Per Pallet
08MHSSPS16	Straights 16/Carton	1.5	140
08MHSSPC16	Corners 16/Carton	1.7	140
08MHSSPC48	Corners 48/Carton	5.25	36

The information herein should not be considered all-inclusive and should always be accompanied by a review of the Mule-Hide specifications and guidelines and good application practices.

This information herein is based upon data and knowledge considered to be true and accurate at the time of printing and is provided for the reader's consideration, investigation and verification. No statement made by anyone may supersede this information, except when done in writing by Mule-Hide Products Co., Inc. Mule-Hide Products Co., Inc. does not warrant any results to be obtained. Statements concerning possible use of Mule-Hide products are made without knowledge of your particular roof and such an application may not be fit for your particular purpose. MULE-HIDE DISCLAIMS ALL WARRANTIES, INCLUDING THE IMPLIED WARRANTY OF MERCHANTABILITY AND FITNESS FOR A PARTICULAR PURPOSE, except written warranties attached to Mule-Hide products and written warranties signed by an officer of Mule-Hide.

Visit the Mule-Hide website at www.mulehide.com prior to any installation for updated technical specifications and details. Mule-Hide is a U.S. registered trademark. All rights reserved. REV 0 9/23