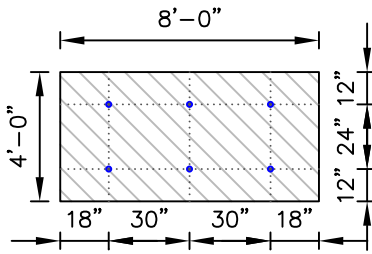


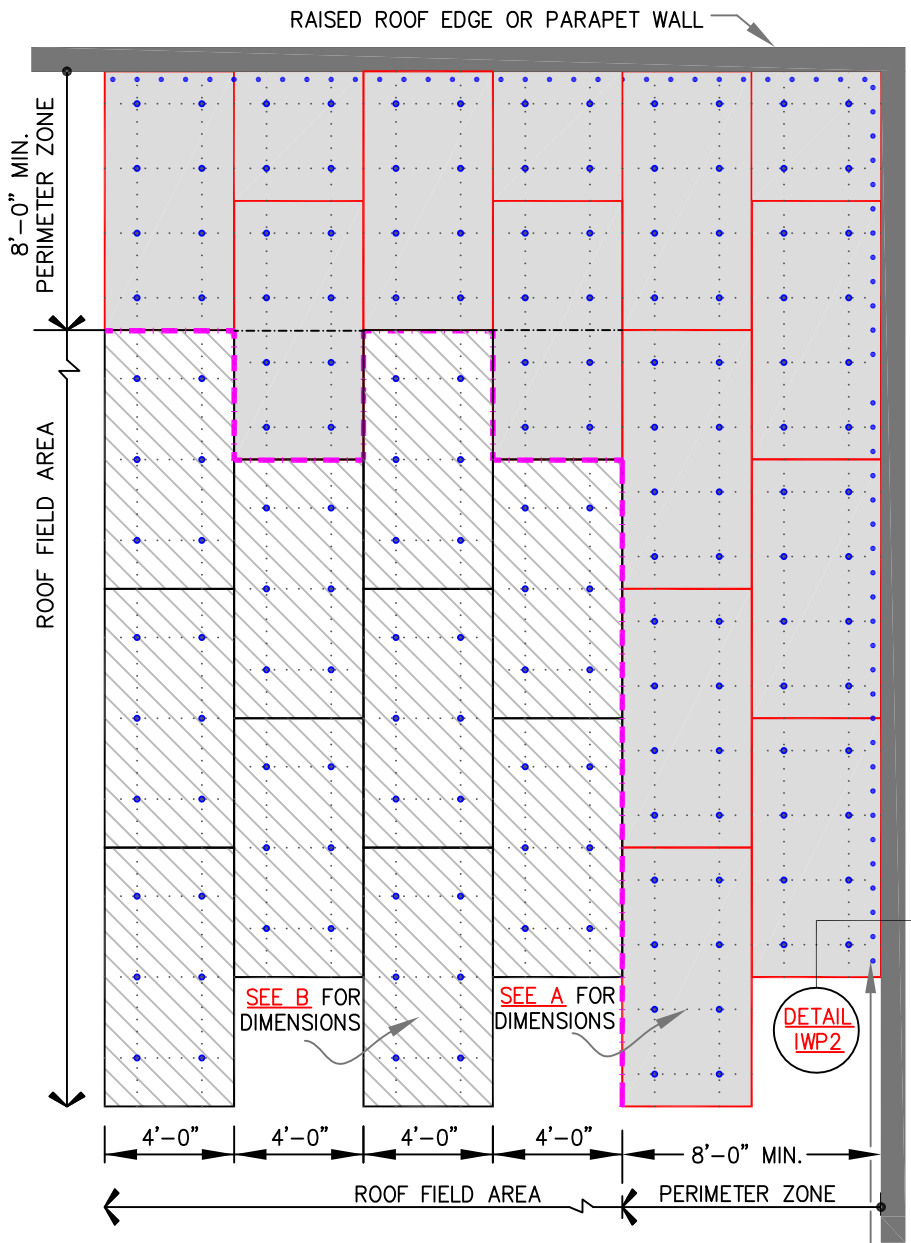
(A) PERIMETER ZONE
8 FASTENERS PER 4'X8' BOARD



(B) FIELD OF ROOF
6 FASTENERS PER 4'X8' BOARD

NOTES:

1. INDUCTION WELD CARDBOARD DISKS ARE REQUIRED UNDER INDUCTION WELDING PLATES WHEN USING NON-FACED EPS (EXPANDED POLYSTYRENE) OR XPS (EXTRUDED POLYSTYRENE) INSULATIONS.
2. PERIMETER ENHANCEMENTS REQUIRED FOR WIND SPEED COVERAGE GREATER THAN 72MPH. CONTACT MULE-HIDE TECHNICAL DEPARTMENT FOR REQUIREMENTS.



MEMBRANE FASTENED MINIMUM 12" O.C. AT ANGLE(S) CHANGES. FOR ADDITIONAL INFORMATION SEE DETAIL [IWP2](#)

- PERIMETER AREA
- FIELD AREA
- MULE-HIDE FASTENER & INDUCTION WELDING PLATE

DECK TYPE	DECK THICKNESS	FASTENER	INDUCTION WELDING PLATE
STEEL	22 GAUGE	MULE-HIDE EHD FASTENER	3-1/8" DIAMETER
PLYWOOD	15/32"	MULE-HIDE EHD FASTENER	3-1/8" DIAMETER

NOTE: AT IN-FILL MINOR PIECES, USE MIN. 2 FASTENERS.

MULE-HIDE PRODUCTS

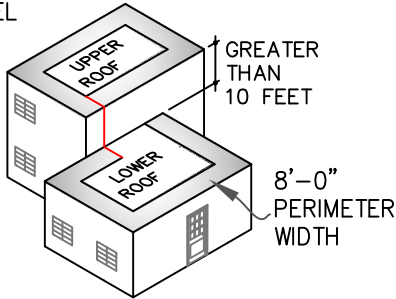
INDUCTION WELDING PLATES FASTENING REQUIREMENTS
SYSTEMS:
HEAT WELD MEMBRANE MECHANICALLY ATTACHED

DETAIL NO.:
MHT-IWP1

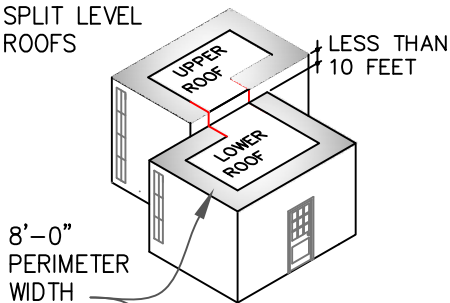
REVISION DATE: 05/2020

ROOF ZONES FOR MINIMUM ONE FASTENER PER 4 SQUARE FEET

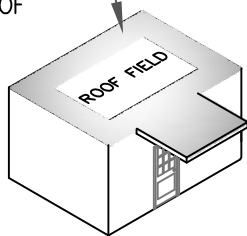
SPLIT LEVEL ROOFS



SPLIT LEVEL ROOFS

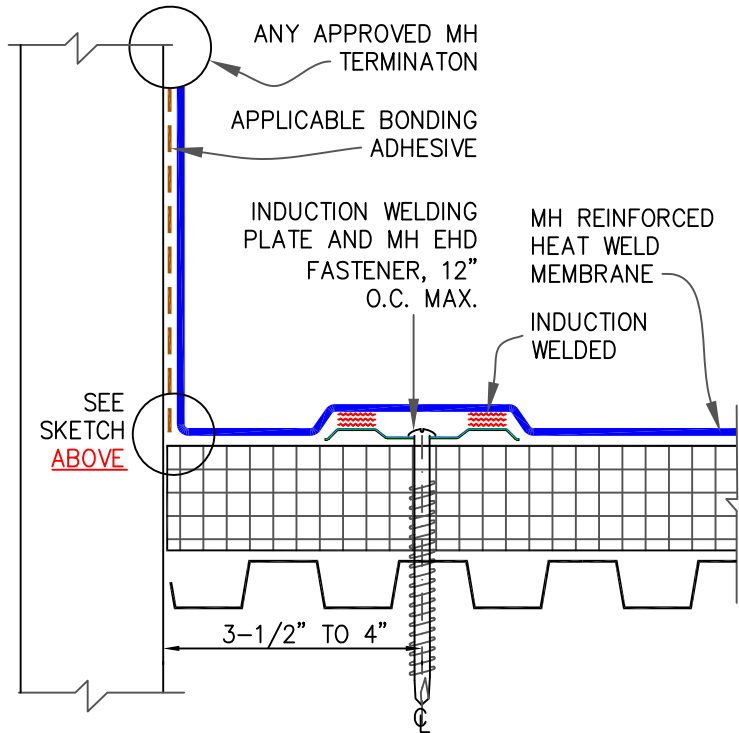
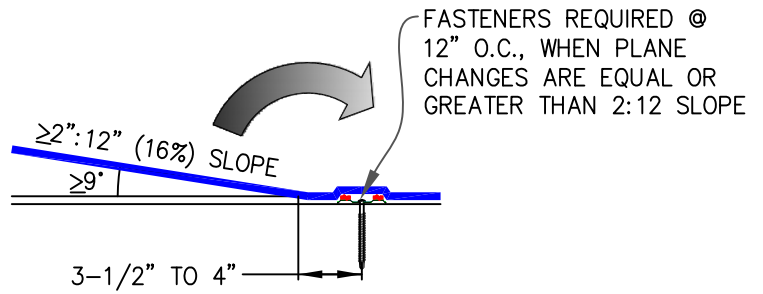
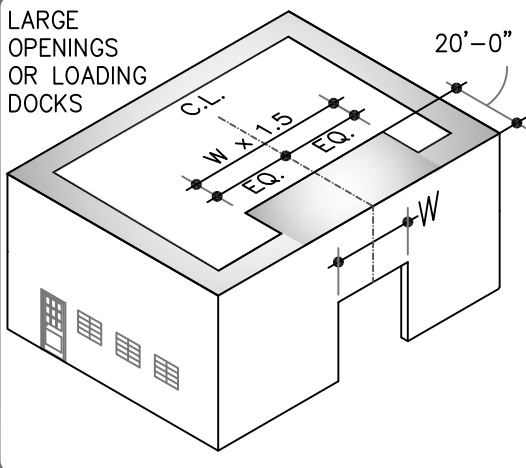


CANOPY ROOF



MAIN ROOF EXTENDING ON THE SAME LEVEL

LARGE OPENINGS OR LOADING DOCKS



ANGLE CHANGE SECUREMENT

NOTES:

1. INDUCTION WELD CARDBOARD DISKS ARE REQUIRED UNDER INDUCTION WELDING PLATES WHEN USING NON-FACED EPS (EXPANDED POLYSTYRENE) OR XPS (EXTRUDED POLYSTYRENE) INSULATIONS.

MULE-HIDE PRODUCTS

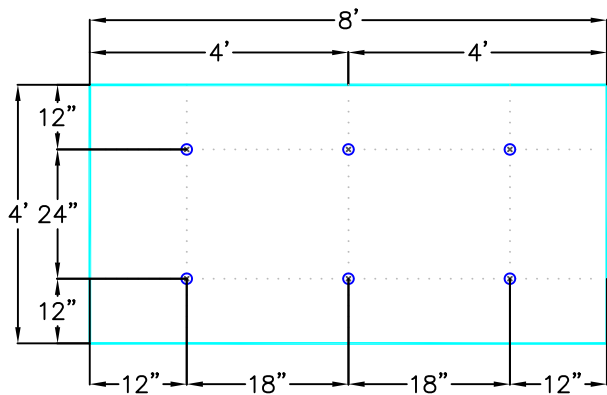
**INDUCTION WELDING PLATES
BASE ATTACHMENT**

**SYSTEMS:
HEAT WELD MEMBRANE
MECHANICALLY ATTACHED**

DETAIL NO.:

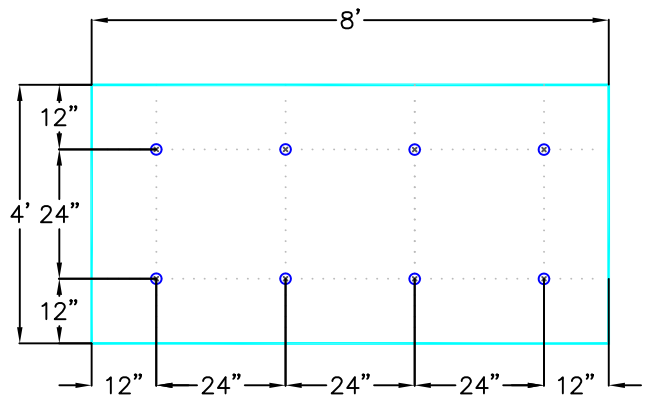
MHT-IWP2

REVISION DATE: 05/2020



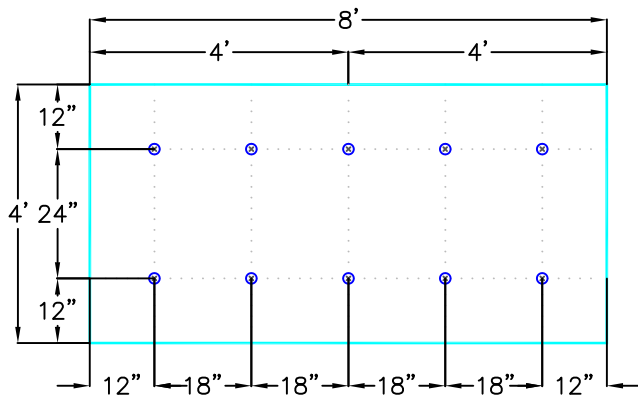
6 FASTENERS PER 4'X8' BOARD

FM 1-90 (FIELD)



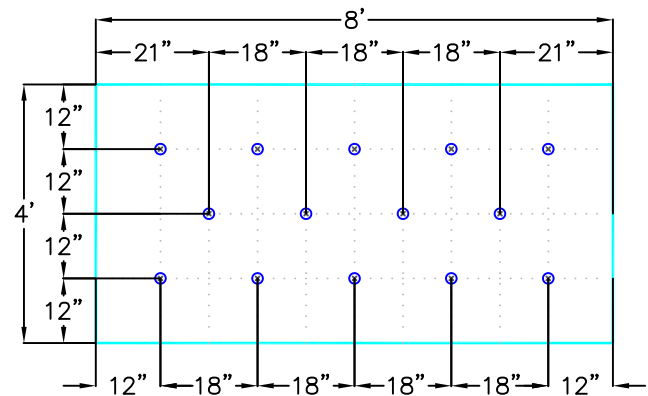
8 FASTENERS PER 4'X8' BOARD

FM 1-105 (FIELD) GRADE 'C' STEEL DECKS
FM 1-120 (FIELD) GRADE 'E' STEEL DECKS



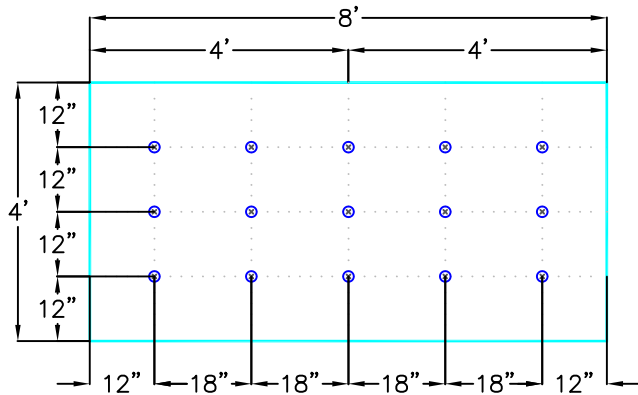
10 FASTENERS PER 4'X8' BOARD

FM 1-90 (PERIMETER) ENHANCEMENT PATTERN



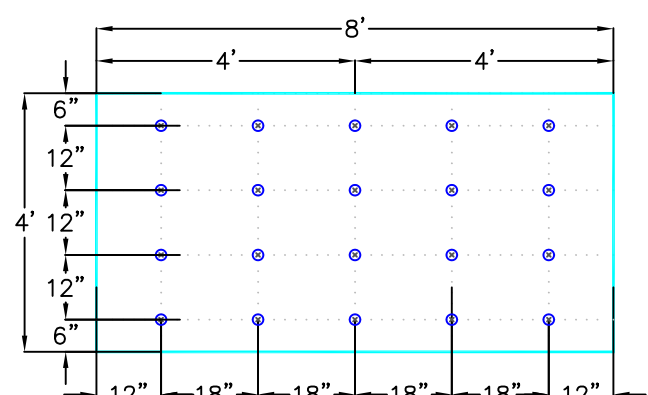
14 FASTENERS PER 4'X8' BOARD

FM 1-105 (PERIMETER) ENHANCEMENT GRADE 'C' STEEL DECKS
FM 1-120 (PERIMETER) ENHANCEMENT GRADE 'E' STEEL DECKS



15 FASTENERS PER 4'X8' BOARD

FM 1-90 (CORNER) ENHANCEMENT PATTERN



20 FASTENERS PER 4'X8' BOARD

FM 1-105 (CORNER) ENHANCEMENT GRADE 'C' STEEL DECKS
FM 1-120 (CORNER) ENHANCEMENT GRADE 'E' STEEL DECK

**MULE-HIDE
PRODUCTS**

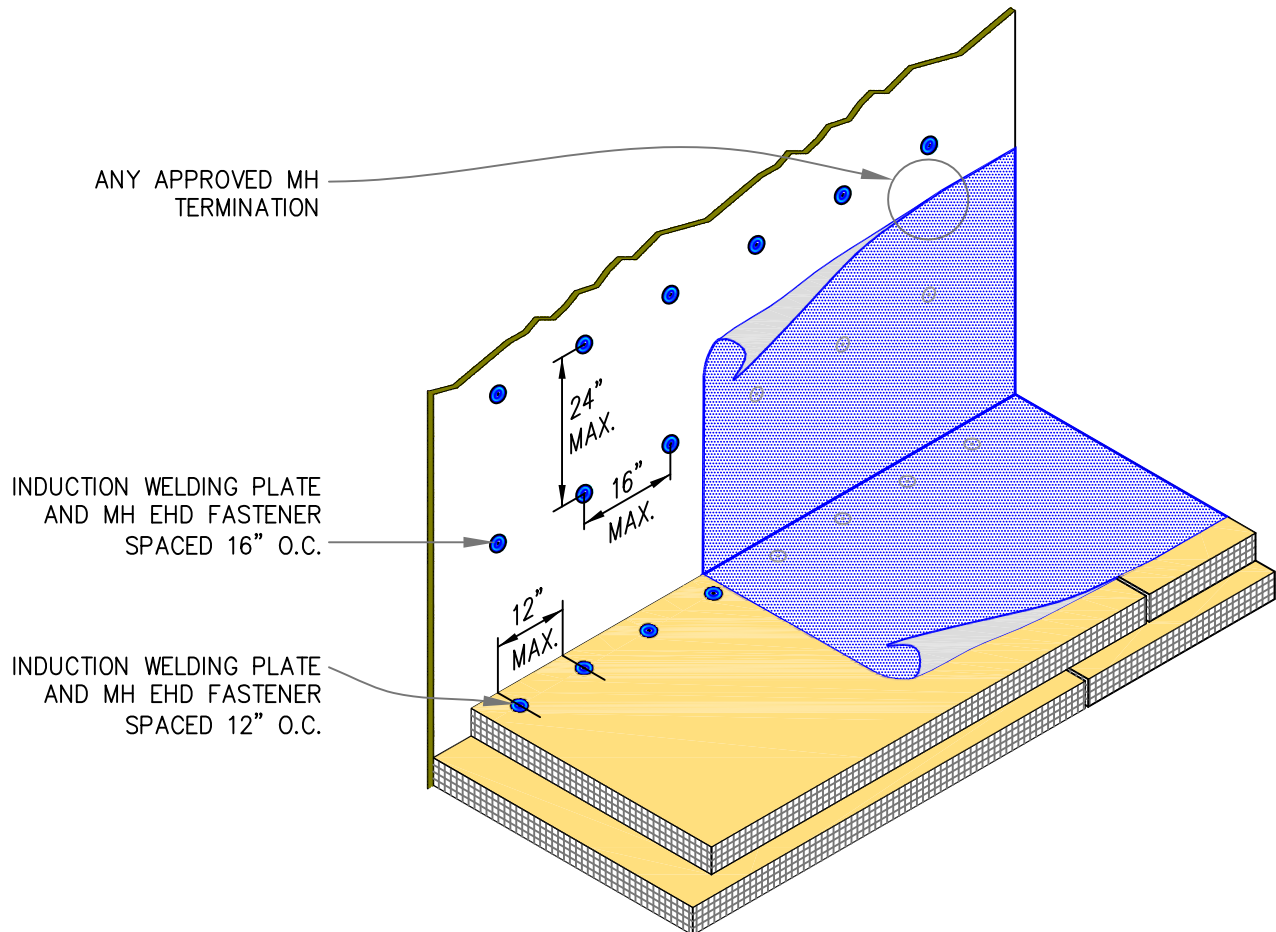
**INDUCTION WELDING PLATES
FM FASTENING PATTERNS**

**SYSTEMS:
HEAT WELD MEMBRANE
MECHANICALLY ATTACHED**

DETAIL NO.:

MHT-IWP3

REVISION DATE: 05/2020



NOTES:

1. FASTENERS MUST PENETRATE INTO WOOD OR METAL STUDS, WHERE WALL IS BUILT WITH STUDS.
2. INDUCTION WELD CARDBOARD DISKS ARE REQUIRED UNDER INDUCTION WELDING PLATES WHEN USING NON-FACED EPS (EXPANDED POLYSTYRENE) OR XPS (EXTRUDED POLYSTYRENE) INSULATIONS.
3. INSULATION FASTENING NOT SHOWN FOR CLARITY.

**MULE-HIDE
PRODUCTS**

**INDUCTION WELDING PLATES
WALL ATTACHMENT**
**SYSTEMS:
HEAT WELD MEMBRANE
MECHANICALLY ATTACHED**

DETAIL NO.:
MHT-IWP5
REVISION DATE: 05/2020