

ELASTOMERIC ACRYLIC COATINGS

SYSTEMS & PRODUCTS



"The name trusted in roofing since 1906"



OUR PROMISE

THROUGH ONGOING INTERCHANGE OF EXPERIENCES WITH CONTRACTORS, MULE-HIDE KEEPS ON TOP OF THE LATEST ROOFING REQUIREMENTS AND SOLUTIONS

Trusted in roofing since 1906, Mule-Hide is the right choice for all kinds of installations. Our time-tested and proven systems are affordable and easy to install, and they meet even the strictest demands of today's commercial, industrial, and institutional buildings — always with an eye on the future.

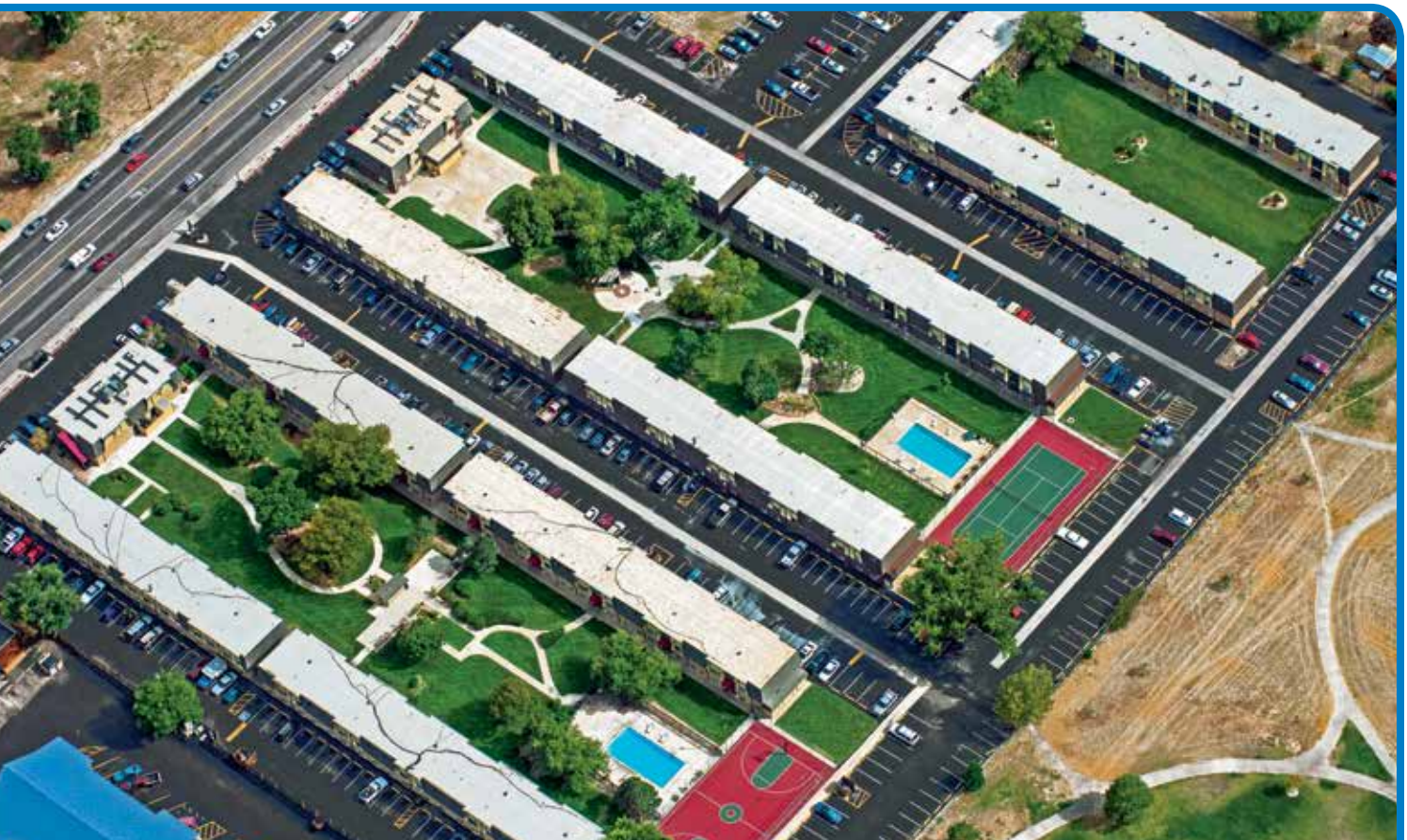
We can help you with everything from membrane selection to determining the best way to ensure a watertight roof. And because providing total roofing systems is our business, you can count on Mule-Hide to ensure the compatibility and performance of any and every component you choose.

WARRANTY PROGRAM

Mule-Hide offers an extensive warranty program with several options for commercial projects, including Membrane Warranties, Standard System Warranties and Premium System Warranties. Complete information on the warranties can be found at our website: www.mulehide.com, under the Warranty Information tab.

A Mule-Hide representative inspects all commercial projects for which a Standard System Warranty or a Premium System Warranty is requested prior to the issuance of the warranty. To be eligible for a System Warranty (either Standard or Premium), the installing contractor must be a Mule-Hide Warranty Eligible contractor. More information on becoming a Mule-Hide Warranty Eligible Contractor can be found at our Web site: www.mulehide.com, under the Warranty Information tab.

Mule-Hide also offers a selection of Membrane Warranties that are available for residential (single family dwelling) projects.



ELASTOMERIC ACRYLIC COATING BENEFITS

LASTING RESTORATION OR REPAIR KEEPS EXISTING ROOFS OPERATING EFFICIENTLY.

Every year that a building owner can keep the existing roof operating efficiently, keeps money in their pocket. Comprising nearly one-third of operating costs, energy consumption is the single biggest expense to commercial building owners today. Investing in an energy efficient roof can reap substantial savings.

ENERGY EFFICIENT ROOFS

White Mule-Hide A-300 FINISH has been independently tested to EPA guidelines with results of initial solar reflectance values up to 86% and 3 year aged values up to 72%, plus emissivity values of 91%, can reduce surface temperatures on metal roofs by as much as 50°F and interior temperatures by 15°F. For a building to maximize an internal cool temperature, the roof must keep out a high percentage of solar heat hitting it (reflectivity), and let out a high percentage of the heat it has absorbed (emissivity).

COMPARE THE LIFETIME COST OF REROOFING!

With Mule-Hide Elastomeric Coatings, restoration or retrofit are attractive alternatives. More economical than a new roof, our professional quality products offer trusted performance with quick application & cleanup using brush, roller, or airless sprayer. That means minimal disruption for the building owner as well as installed cost value. Maintenance engineers and facility/property managers are aware of Lifecycle Costing (LCC) and are looking for ways to lower cash outlays (maintenance costs) and maximize expense allowances for budget control.

EXTENDS ROOF LIFECYCLE

Advances in polymer chemistry have resulted in these professional grade products that protect building assets by extending the life of the existing roof.

EASY TO REPAIR

Scrapes or gouges in coated areas are usually repaired simply by cleaning and applying new product to the damaged area where it bonds to the existing coating.

FLEXIBILITY

Buildings are dynamic. Thermal shock, settling and seismic action can affect roofs. Mule-Hide Elastomeric Acrylic Coatings remain flexible in hot and cold temperatures (from -15°F to 200°F) to accommodate building movement and will not crack or blister like non-elastomeric paints & coatings. And since it forms a thick rubber-like blanket of protection, it has the added benefit of noise reduction over metal roofs.



ENCAPSULATES RUST

For metal roof restoration, Mule-Hide A-125 METAL ROOF PRIMER encapsulates existing rust and inhibits the development of new rust.

TAX RELIEF

A tax advantage for building owners while saving energy! Expensing coatings versus capital depreciation lowers cash outlays and maximizes tax expense allowances.

BEAUTIFUL STRENGTH

Excellent roof protection and appearance. Seals moisture out, yet adds virtually no weight making it ideal for retrofit applications. Resists chalking, mold, and mildew, and has exceptional UV resistance. (Roof must be sound.)

METAL ROOF COATING SYSTEM

LASTING RETROFIT & REPAIR METAL ROOFS

Applicators and building owners trust Mule-Hide Professional Grade Coatings for long-term performance.

- Garage, Shed and other Residential Metal Roofs
- Farm Building Metal Roofs
- Mobile Office Roofs
- Commercial/Industrial Metal Roofs
- Mobile Home Roofs

Power Wash 115 CLEANER



Prime A-125 METAL ROOF PRIMER



Flash fasteners, penetrations, seams, joints, A-200 FLASHING GRADE



Finish A-300 FINISH





EPDM RESTORATION SYSTEM™

GIVE EPDM ROOFS A SECOND CHANCE WITH A MULE-HIDE SECOND SKIN

Applying the Mule-Hide EPDM Restoration System is an easy 3-step process that lets crews finish EPDM restoration jobs in record time for minimal disruption to building owners. Water based and needs no fabric!

- Seals sound EPDM roofs for like-new performance. [Must first repair per NRCA guidelines.]
- Adds years to the life of existing EPDM roofs.
- Turns black EPDM into a "COOL ROOF" to offer your customers energy savings while protecting the membrane from the elements.

Wash
115 Cleaner



Power Rinse
Water



Finish
A-300 FINISH



THE PRODUCTS



115 CLEANER

Highly effective cleaner removes dirt and deposits commonly found on roof decks. Apply with a 2000-psi power washer to cut through grease and rinse away. Apply by low pressure sprayer.

Container: 5 Gal Pail or 55 Gal Drum



A-125 METAL ROOF PRIMER

Zinc-rich, dark yellow color for easy to see coverage. Improves adhesion of finish coating while it encapsulates rust and inhibits development of new rust. Apply by brush, roller, or airless sprayer.

Container: 5 Gal Pail, 55 Gal Drum, 275 Gal Tote



A-200 FLASHING GRADE

Highly flexible sealant for seams, penetrations, flashings, metal roof fasteners, and other areas to fill voids in the substrate. Application of product can be brushed or extruded.

Container: 1 or 5 Gal Pail



A-300 FINISH

CRRC® rated and ENERGY STAR® listed highly elastomeric coating. Exceptional durability and UV stability extends roof life. Attractive bright white reduces energy consumption. Apply by brush, roller, or airless sprayer.

Container: 1 or 5 Gal Pail, 55 Gal Drum, 275 Gal Tote



Available Colors: White Dark Grey Light Grey Beige Tan
Colors shown on this chart are representative of product. Actual colors may vary from color shown.



A-320 FINISH

For coating over asphaltic substrates and where periodic ponded water occurs. CRRC® rated and ENERGY STAR® listed. Areas where ponded water remains for more than 48 hours may require the installation of new drains to provide proper drainage or tapered insulation and new, compatible roofing materials to create positive drainage to the existing drain system. Apply by brush, roller or airless sprayer.

Container: 1 or 5 Gal Pail, 55 Gal Drum, 275 Gal Tote



A-301 SKYLIGHT FINISH

Coats weathered skylight panels. Milky white in pail, it dries to a translucent, flexible film for a watertight seal that allows light to pass through. Apply by brush, roller or airless sprayer.

Container: 1 or 5 Gal Pail



A-400-W MASONRY WALL COATING

Formulated to provide a flexible, waterproofing, liquid-applied membrane for exterior masonry surfaces. Apply by brush, roller or airless sprayer.

Container: 5 Gal Pail, 55 Gal Drum



Available Colors: White Dark Grey Light Grey Beige Tan
Colors shown on this chart are representative of product. Actual colors may vary from color shown.

A-600 BASE

An all-acrylic polymer based coating designed for improved adhesion to the surface of suitably cleaned, weathered (minimum 4 years) TPO (Thermoplastic PolyOlefin) roofing membranes and flashings. When applied to a properly cleaned, weathered TPO roof, A-600 BASE will provide a well bonded surface for the application of A-300 FINISH coat. Apply by brush, roller or airless sprayer.

Container: 1 or 5 Gal Pail, 55 Gal Drum, 275 Gal Tote



SEAL-FAST® FABRIC TAPE

Ideal for metal roof seam reinforcement. Made from synthetic rubbers (non-butyl) and resins with a proprietary built-in primer to provide an instant, watertight seal. Remains pliable and can be applied in temperatures above 40°F without primer, down to -20°F with Seal-Fast® Primer. (Materials must be maintained at room temperature.)

Roll Sizes: 2"-24" x 50'

FAST-CAPS®

Polymer modified asphalt disc with aluminum facer used to quickly and effectively seal fasteners on metal roof panels. Comes with securing tool to form discs around fasteners.

Container: 500 Count plus applicator tool



APPLICATION METHODS



Airless
Sprayer



Roller



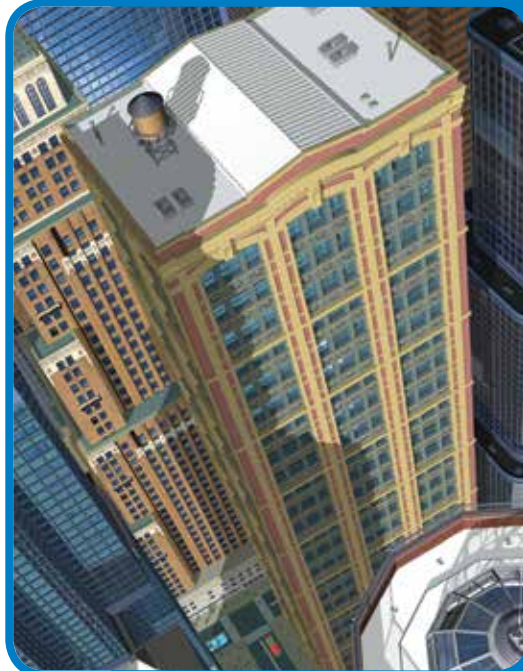
Brush



Low Pressure
Sprayer



Trowel



Contact Mule-Hide Products for specific product approvals and ratings. Featured industry association/organization logos are U.S. registered trademarks. Energy Star is only valid in the United States for Roofing Products.

“The name trusted in roofing since 1906”

Customer Line: 800-786-1492 • www.mulehide.com

Check our website monthly for the latest updates & technical bulletins.

National Support Center • 1195 Prince Hall Drive • Beloit, WI 53511 • tel. 608.365.3111 • fax. 608.365.7852

The information herein should not be considered all-inclusive and should always be accompanied by a review of the Mule-Hide specifications and guidelines and good application practices.

This information herein is based upon data and knowledge considered to be true and accurate at the time of printing and is provided for the reader's consideration, investigation and verification. No statement made by anyone may supersede this information, except when done in writing by Mule-Hide Products Co., Inc. Mule-Hide Products Co., Inc. does not warrant any results to be obtained. Statements concerning possible use of Mule-Hide products are made without knowledge of your particular roof and such an application may not be fit for your particular purpose. MULE-HIDE DISCLAIMS ALL WARRANTIES, INCLUDING THE IMPLIED WARRANTY OF MERCHANTABILITY AND FITNESS FOR A PARTICULAR PURPOSE, except written warranties attached to Mule-Hide products and written warranties signed by an officer of Mule-Hide.

Visit the Mule-Hide website at www.mulehide.com prior to any installation for updated technical specifications and details. Mule-Hide, Liqui-Thix, Seal-Fast and Fast-Caps are U.S. registered trademarks. All rights reserved.

