



Product Data Sheet

2-Piece Snap-On Compression LG

Description:

The 2-Piece Snap-On Compression LG (Large Face) system may be used as a perimeter flashing for the Mule-Hide roofing system. The system consists of a 22-gauge Galvalume® base and a snap-on aluminum cover.

- Base and cover is fabricated in 10' lengths and 9" – 13" widths.
- Cover is double-hemmed to protect roof material from excessive wear.
- Bird beak strengthening bend on base.
- Pre-punched holes in base.
- Ready to assemble inside and outside corners are available.

Contact Mule-Hide to request a color chart, samples and information regarding custom metals and finishes.

Energy Efficiency:

LEED® and ENERGY STAR® compliant; 100% recyclable.

Installation:

1. A wood nailer is required.
2. This nailer should be attached to the wall in accordance with ANSI/SPRI ES-1 3.9.
3. Install in accordance with Mule-Hide details.
4. Any deviation from the requirements set forth in the detail drawings must be pre-approved, in writing, by the Mule-Hide Technical Department.

Codes and Standards:

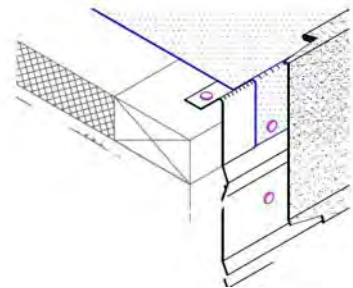
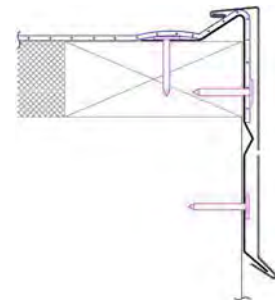
- ANSI/SPRI ES-1 compliant.

Warranty:

Mule-Hide metal accessories are eligible for warranty coverage when properly installed as part of a Standard or Premium warrantable system. Please visit our Web site or call us for more information.

Technical Services:

Product samples, detail sheets, color chips, and color chart are available for your submittal package. For assistance with questions or submittals, contact your local representative or call Mule-Hide.



Material	Gauge	Finish
Aluminum	.040	Mill or Kynar®