



Product Data Sheet Counter Flashing and Reglets

Description:

Reglets and counter flashings provide a watertight protection along parapet wall termination that delivers a professional appearance. Available as a 1 or 2-Piece system and surface mount.

- Manufactured from various metals, (see chart below), to specific projects in 10' lengths.
- Counter flashes parapet terminations providing a finished look.
- Bottom flashing on 2-piece reglet is easily removed for re-roofing or maintenance. Rivets secure counter flashing to receiver.

Contact Mule-Hide to request a color chart, samples and information regarding custom metals and finishes.

Energy Efficiency:

LEED® and ENERGY STAR® compliant; 100% recyclable.

Installation:

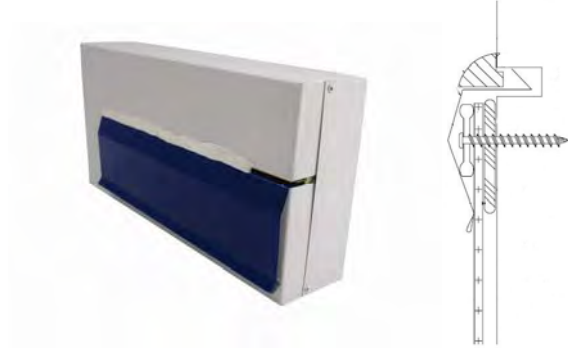
1. Only applicable to concrete or block walls.
2. Install in accordance with Mule-Hide Details #MHSM-6130 and #MHSM-6145.
3. Any deviation from the requirements set forth in the detail drawings must be pre-approved, in writing, by the Mule-Hide Technical Department.

Warranty:

Mule-Hide metal accessories are eligible for warranty coverage when properly installed as part of a Standard or Premium warrantable system. Please visit our Web site or call us for more information.

Technical Services:

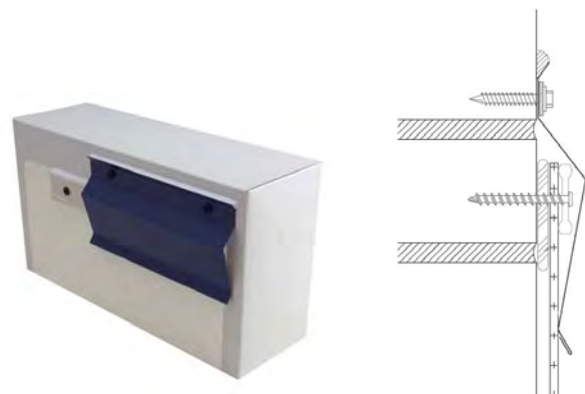
Product samples, detail sheets, color chips, and color chart are available for your submittal package. For assistance with questions or submittals, contact your local representative or call Mule-Hide.



1-Piece Reglet



2-Piece Reglet



Surface Mount
Counter Flashing

Material	Gauge	Finish
Aluminum	.040	Mill or Kynar®
Stainless Steel	24-gauge	N/A
Bonderized Steel	24-gauge	N/A
Galvalume	24-gauge	Mill or Kynar®
Copper	16 oz.	Mill