

NOTES:

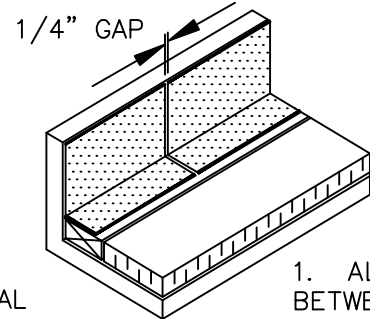
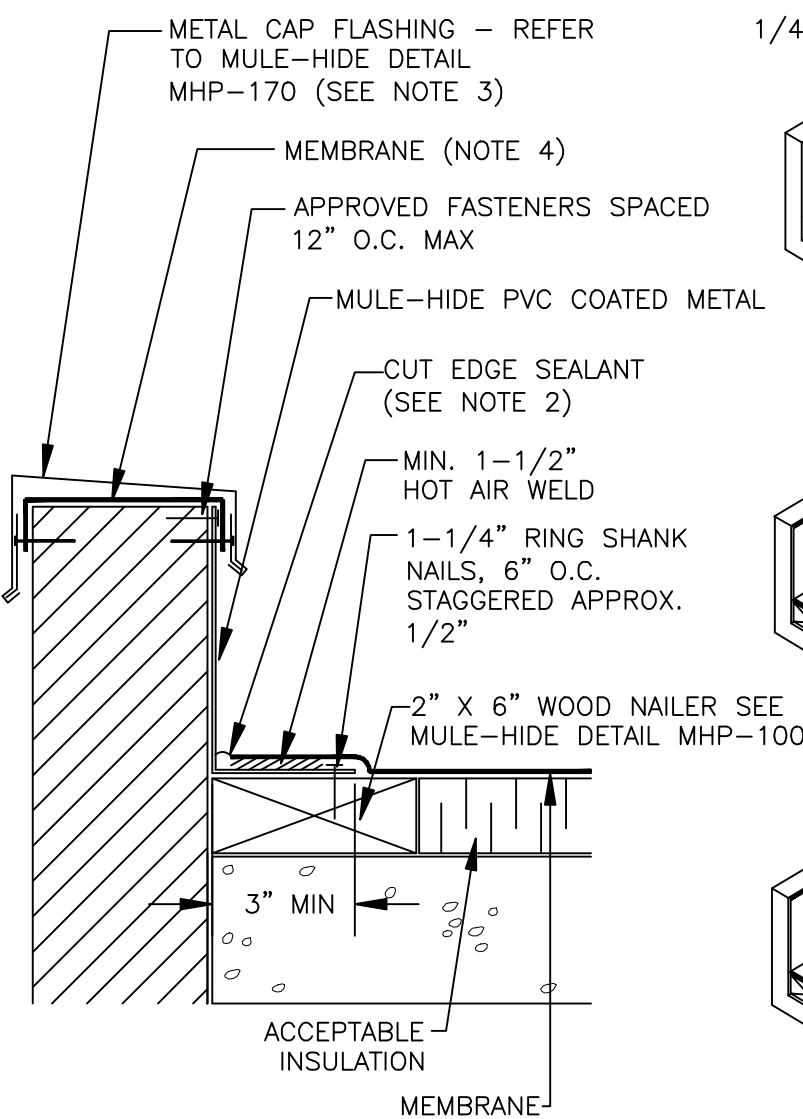
1. DETAILS TO BE USED IN CONJUNCTION WITH STANDARD GUIDE SPECIFICATIONS CONTAINING REQUIREMENTS FOR NAILERS, INSULATION, SLIPSHEETS, ETC.

2. PVC EDGE SEALANT IS REQUIRED ON ALL CUT OR NON-ENCAPSULATED EDGES OF REINFORCED MEMBRANE. THIS INCLUDES FACTORY CUT MEMBRANE.

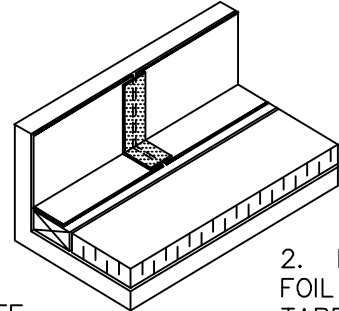
3. A COUNTERFLASHING TERMINATION MAY BE USED IN LIEU OF METAL CAP FLASHING. REFER TO MULE-HIDE DETAIL MHP-171.

4. PLACE A LAYER OF MULE-HIDE PVC MEMBRANE UNDER THE METAL CAP TO PROTECT AGAINST MOISTURE INFILTRATION AT JOINTS.

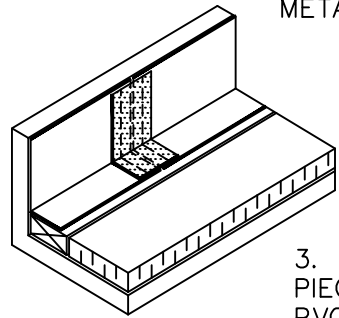
5. DUCT TAPE MAY BE SUBSTITUTED FOR FOIL TAPE.



1. ALLOW 1/4" GAP BETWEEN ADJOINING SECTIONS OF MULE-HIDE PVC COATED METAL.



2. INSTALL 2" WIDE FOIL TAPE OR DUCT TAPE OVER JOINT IN MULE-HIDE PVC COATED METAL.



3. HEAT WELD 6" WIDE PIECE OF NON-REINF. PVC MEMBRANE OVER JOINT.

**MULE-HIDE
PRODUCTS CO., INC.
04/01/2007**

**PVC COATED WALL FLASHING
SYSTEMS:
ALL PVC**

**DETAIL NO:
MHP-121**