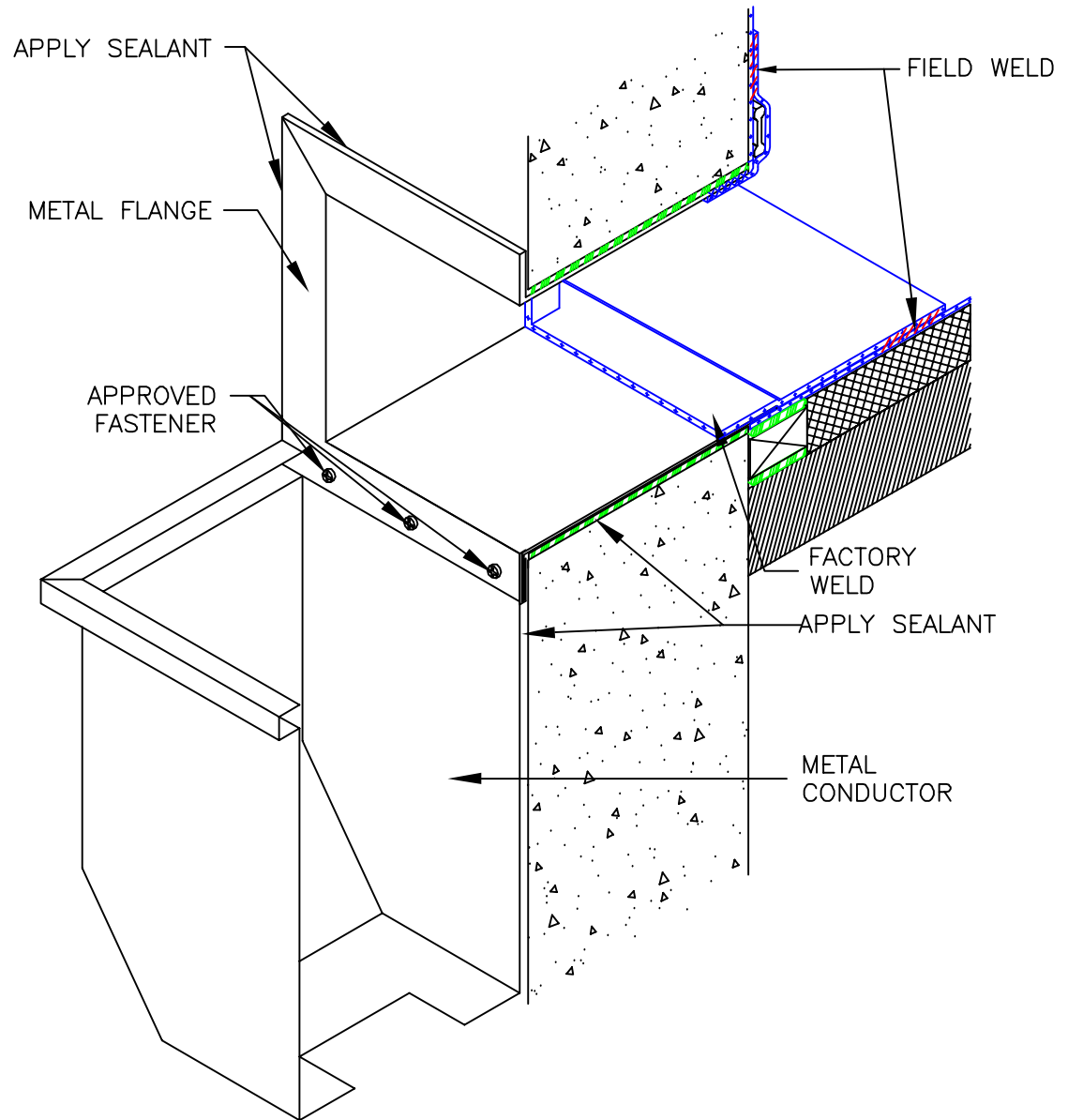


NOTES:

1. APPLY A BEAD OF SEALANT OR MASTIC BETWEEN THE COLLECTOR HEAD AND THE WALL.
2. INSTALL SCUPPER IN ACCORDANCE WITH APPROPRIATE SYSTEM DETAIL.
3. CONDUCTOR CAN BE INSTALLED IN CONJUNCTION WITH ANY SCUPPER DETAIL. THIS DETAIL IS SHOWN USING MHP-2061.
4. USE STAINLESS STEEL FASTENERS WHEN ATTACHING INTO ACQ TREATED WOOD.

NOTE:

THIS DETAIL IS NOT INCLUDED IN ANY MULE-HIDE LABOR AND MATERIAL WARRANTY



**MULE-HIDE  
PRODUCTS CO., INC.**

**MULE-HIDE PREMANUFACTURED  
CONDUCTOR HEAD  
SYSTEMS:  
ALL SYSTEMS**

**DETAIL NO.:  
MHSM-2071**

REVISION DATE: 01/2013