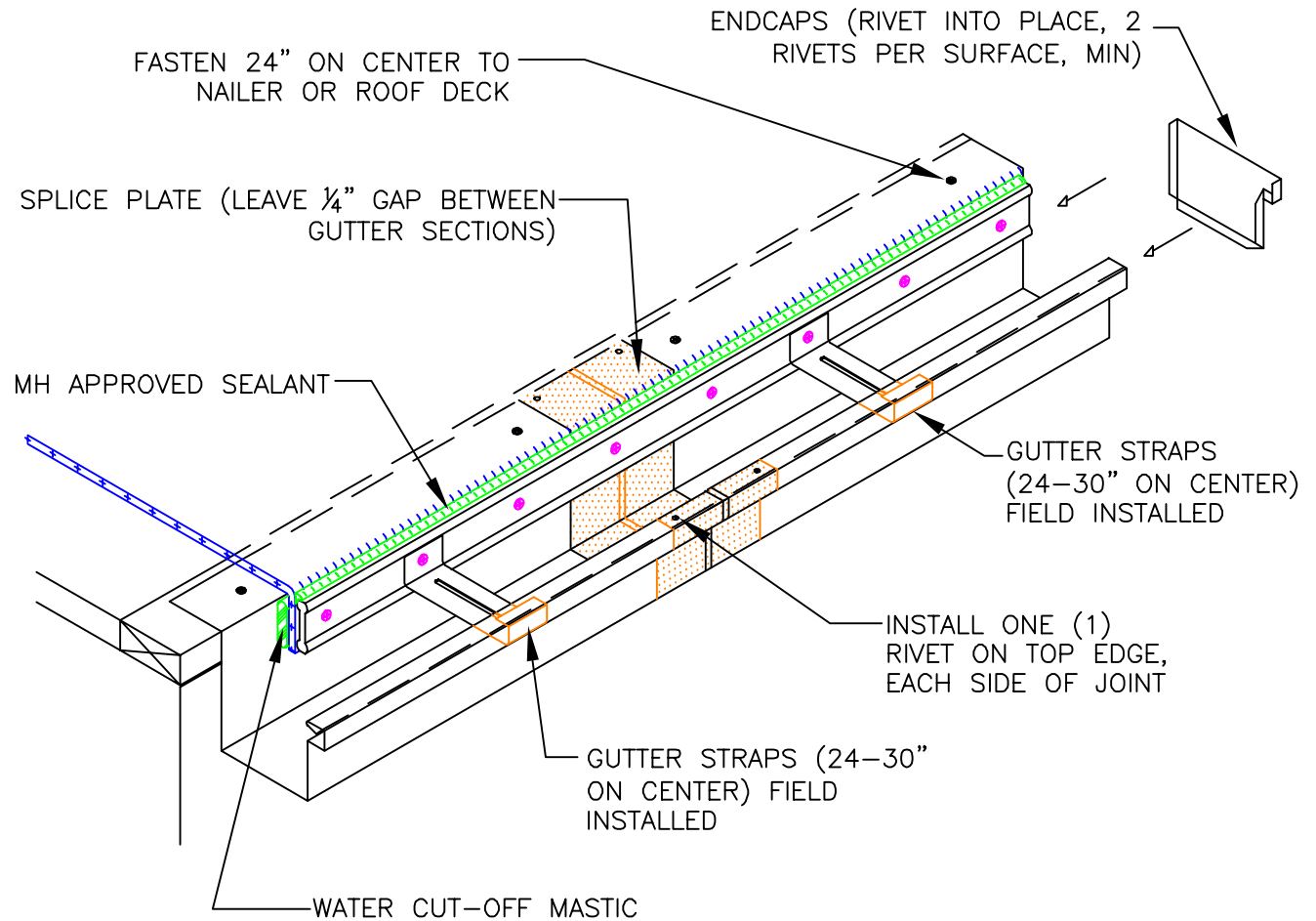


NOTES:

1. ALL JOINTS, SPLICES, CORNERS, AND ENDCAPS ARE TO BE RIVETED INTO POSITION. ON SPLICE PLATES, A MINIMUM OF 2 RIVETS AND 2 FASTENERS ARE TO BE USED. SEE DETAIL MHSM-2090 FOR INSTALLATION.
2. ALL JOINTS, SPLICES, CORNERS AND ENDCAPS MUST HAVE APPROVED SEALANT APPLIED TO THEM TO ENSURE A WATER-TIGHT APPLICATION. APPLY A BEAD OF SEALANT TO THE SPLICE PLATE ON BOTH SIDES OF THE JOINT.
3. ONE EXPANSION JOINT SHOULD BE INSTALLED FOR EVERY 40-50 FEET OF GUTTER BEING INSTALLED.
4. DRAINAGE SLOPE AND DRAIN SIZES ARE TO BE DETERMINED BY LOCAL BUILDING CODE REQUIREMENTS AND ARE THE RESPONSIBILITY OF THE CONTRACTOR TO FOLLOW.
5. USE STAINLESS STEEL FASTENERS WHEN ATTACHING INTO ACQ TREATED WOOD.



NOTE:

THIS DETAIL IS NOT INCLUDED IN ANY MULE-HIDE LABOR AND MATERIAL WARRANTY

**MULE-HIDE
PRODUCTS CO., INC.**

**MULE-HIDE PREMANUFACTURED
GUTTER ATTACHMENT X-SERIES DETAILS
SYSTEMS:**

ALL ROOFING SYSTEMS

DETAIL NO.:

MHSM-2091

REVISION DATE: 01/2013