

FOR DRAINS WITH TAPERED INSULATION AT DRAIN SUMP
GREATER THAN 3" TO 1 HORIZONTAL FOOT

NOTES:

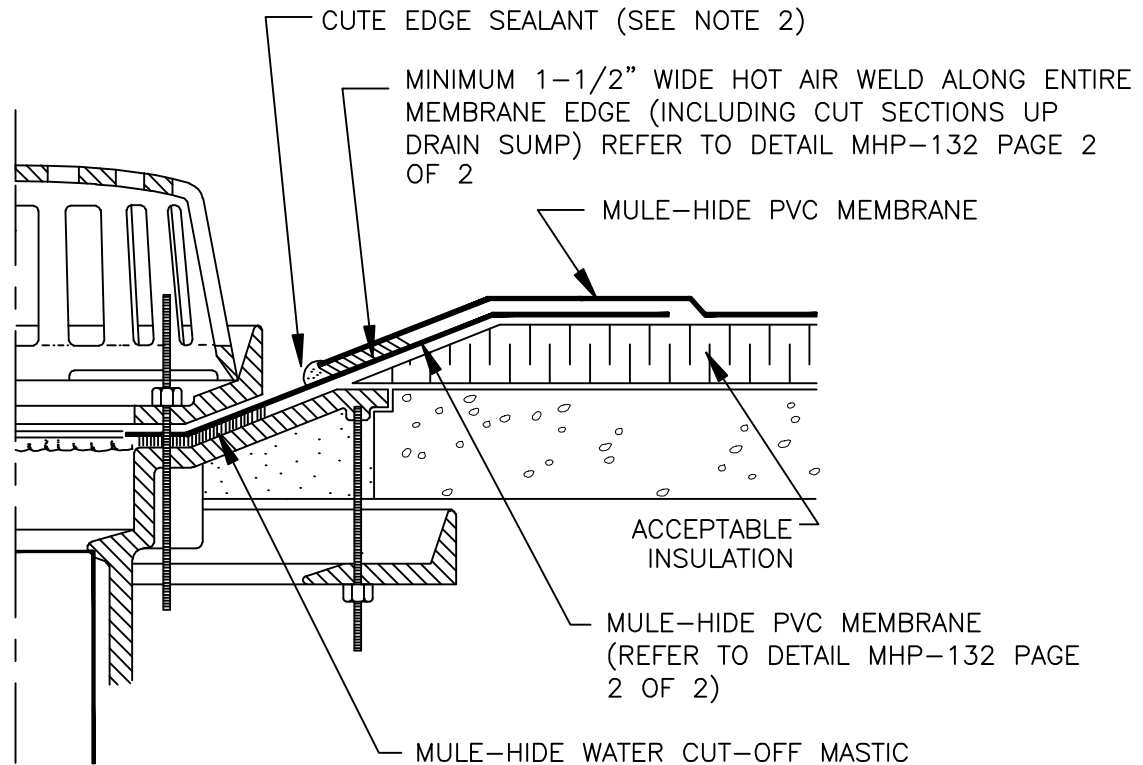
1. DETAILS TO BE USED IN CONJUNCTION WITH STANDARD GUIDE SPECIFICATIONS CONTAINING REQUIREMENTS FOR NAILERS, INSULATION, SLIPSHEETS, ETC.

2. PVC EDGE SEALANT IS REQUIRED ON ALL CUT OR NON-ENCAPSULATED EDGES OF REINFORCED MEMBRANE. THIS INCLUDES FACTORY CUT MEMBRANE.

3. REMOVE ALL LEAD AND OTHER FLASHING.

4. ALL DRAIN BOLTS OR CLAMPS MUST BE IN PLACE TO PROVIDE COMPRESSION ON WATER CUT-OFF MASTIC.

5. CUT MEMBRANE SO IT EXTENDS A MINIMUM OF 1/2" FROM ATTACHMENT POINTS OF THE CLAMPING RING.



**MULE-HIDE
PRODUCTS CO., INC.
04/01/2007**

**ROOF DRAIN FOR DRAIN SUMPS
SLOPED MORE THAN 3" PER FOOT
SYSTEMS:
ALL PVC**

**DETAIL NO:
MHP-132
(PAGE 1 OF 2)**