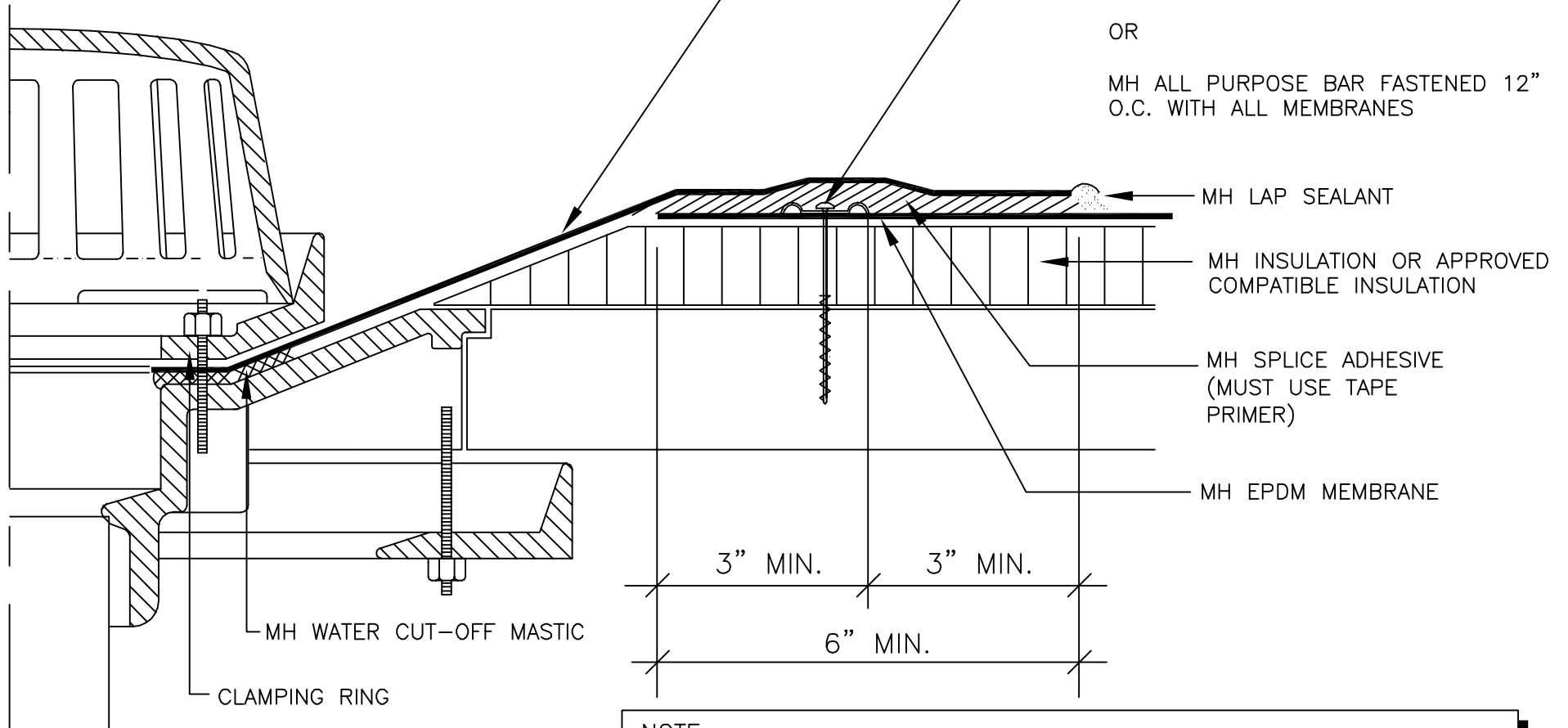


NOTE:

1. FOR ROOF DRAIN SUMPS LESS THAN 2" INCLINE.
2. ALL LEAD AND OTHER FLASHING MUST BE REMOVED ON TEAR-OFF AND ALL RECOVER PROJECTS.
3. IN-SEAM TAPE WITH TAPE PRIMER MAY BE SUBSTITUTED FOR SPLICE ADHESIVE (3" MIN TAPE REQUIRED)



NOTE:
THIS DETAIL IS NOT ACCEPTABLE FOR A 15 OR 20 YEAR WARRANTY.

**MULE-HIDE
PRODUCTS CO., INC.**
2010

**ROOF DRAIN
WITH SUMP
SYSTEMS:
ALL**

DETAIL NO.:
MHE-132