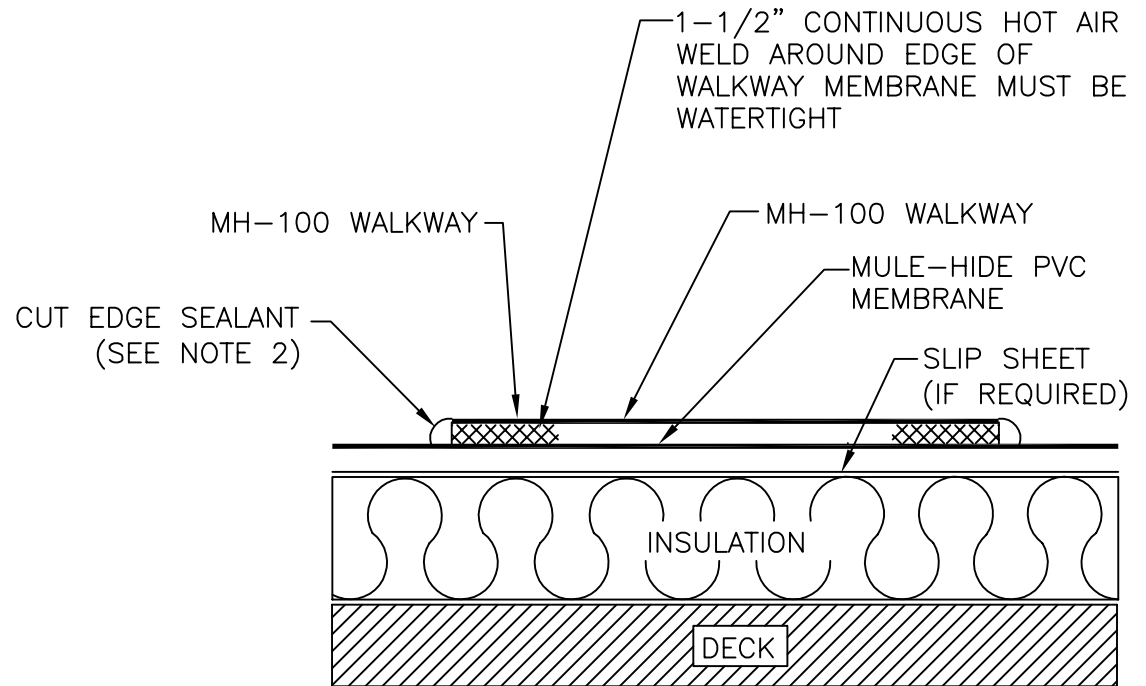


NOTES:

1. DETAILS TO BE USED IN CONJUNCTION WITH STANDARD GUIDE SPECIFICATIONS CONTAINING REQUIREMENTS FOR NAILERS, INSULATION, SLIPSHEETS, ETC.
2. PVC EDGE SEALANT IS REQUIRED ON ALL CUT OR NON-ENCAPSULATED EDGES OF REINFORCED MEMBRANE. THIS INCLUDES FACTORY CUT MEMBRANE.
3. MH-100 WALKWAY IS NOT INTENDED FOR USE IN HEAVY TRAFFIC AREAS.
4. THE MH-100 WALKWAY MUST NOT BE INSTALLED OVER FIELD SEAMS AND FASTENER ROWS AND MUST BE GAPPED FROM THESE AREAS A MINIMUM OF 6".
5. ALL ADJACENT AND ABUTTING WALKWAY RUNS MUST BE GAPPED A MINIMUM OF 6" AND MUST NOT BE OVERLAPPED.



**MULE-HIDE
PRODUCTS CO., INC.
10/17/2017**

**MH-100 PVC WALKWAY
SYSTEMS:
ALL PVC**

**DETAIL NO:
MHP-194**