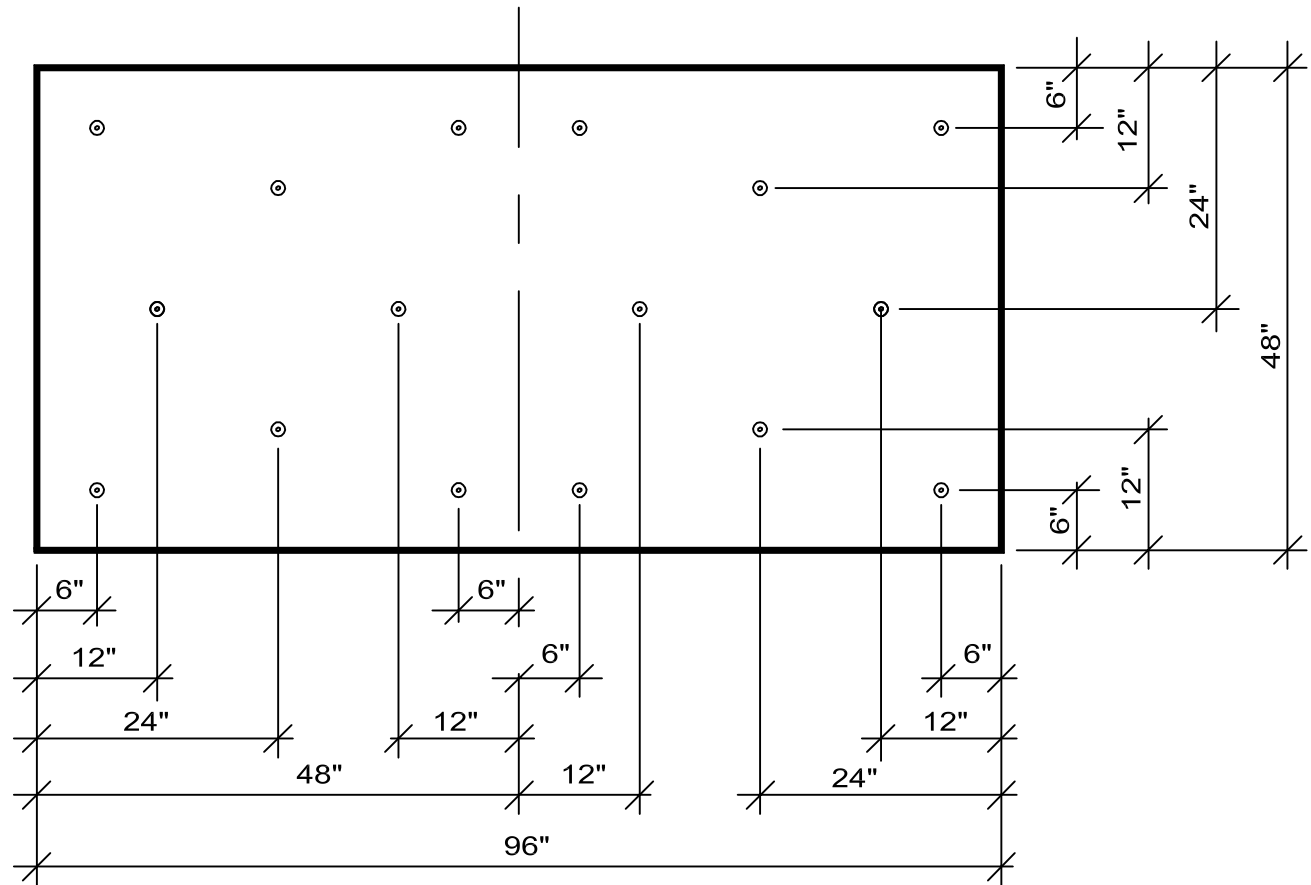


THE ATTACHMENT PATTERN SHOWN IS THE STANDARD PATTERN FOR FIELD ATTACHMENT REQUIRED BY MULE-HIDE. THE ATTACHMENT IN THE PERIMETER AREA IS INCREASED 50% AND 75% IN THE CORNERS.



4' X 8' INSULATION ATTACHMENT (1 PER 2 SF.)
STANDARD ATTACHMENT

MULE-HIDE
PRODUCTS CO.,INC.
2003

INSULATION ATTACHMENT - OPTION 1

SELF-ADHERING MOD BIT SYSTEMS

DETAIL NO.:

MH-MB-INS-1