

NOTES:

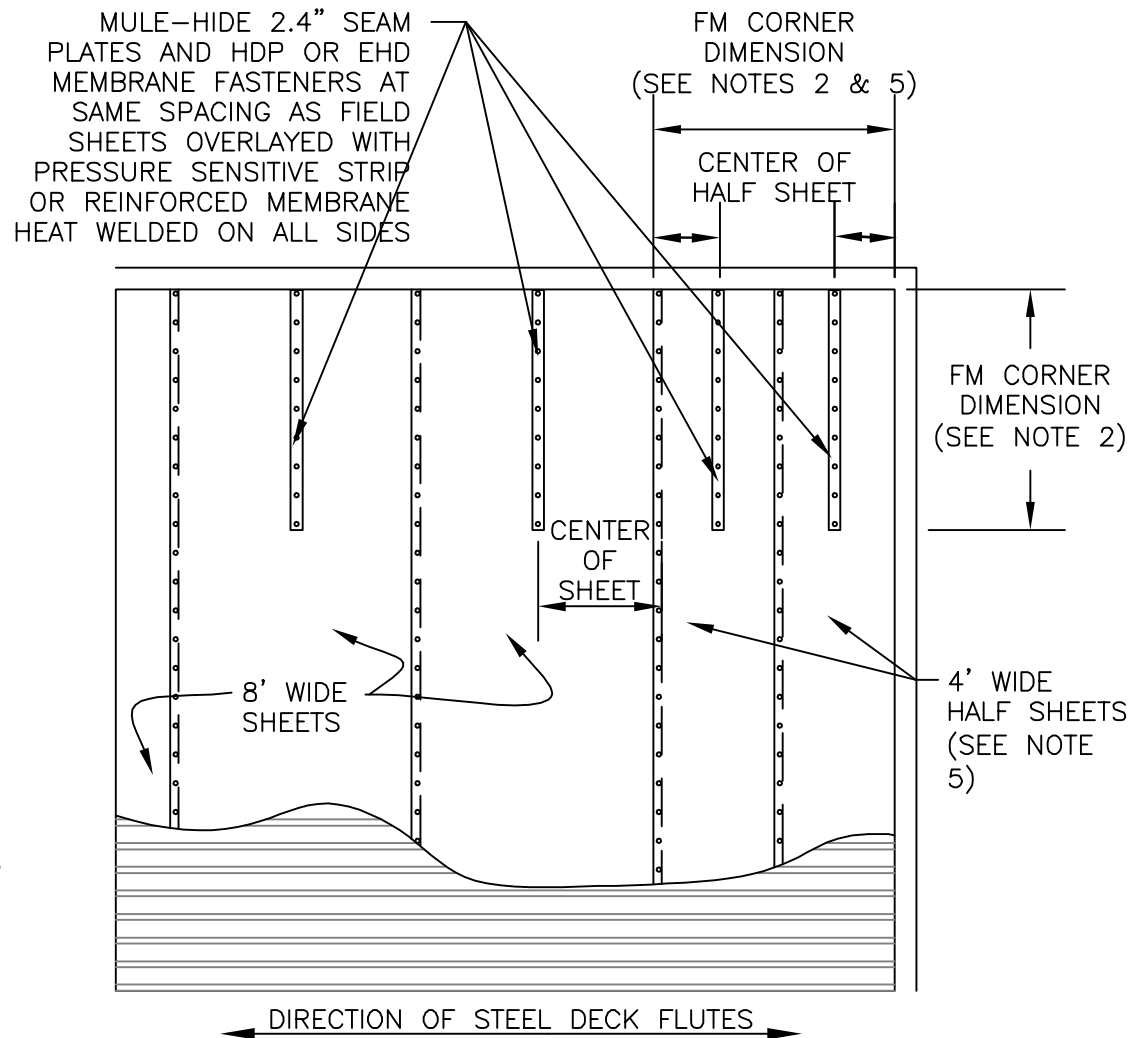
1. DETAILS TO BE USED IN CONJUNCTION WITH STANDARD GUIDE SPECIFICATIONS CONTAINING REQUIREMENTS FOR NAILERS, INSULATION, SLIPSHEETS, ETC.
2. ACCORDING TO PROJECT CONDITIONS, THE SPECIFIER AND/OR APPLICATOR MUST IDENTIFY THE WIDTH DIMENSIONS OF THE ROOF PERIMETERS AND CORNERS IN ACCORDANCE WITH FM DATA SHEETS 1-28 AND 1-29 BASED UPON THE FOLLOWING FORMULA:

- 0.4 TIMES THE BUILDING HEIGHT OR
- 0.1 TIMES THE BUILDING'S LESSER PLAN DIMENSION, WHICHEVER IS SMALLER

THE MINIMUM PERIMETER/CORNER WIDTH SHALL BE NO LESS THAN 3 FEET

3. FOR STEEL DECKS:
 - ALL FASTENERS MUST ENGAGE TOP FLUTES OF DECK
 - IN THE FIELD OF THE ROOF, SEAMS (FASTENER ROWS) MUST RUN PERPENDICULAR TO THE DECK FLUTES
 - PERIMETER HALF SHEETS ARE TO BE USED ONLY WHEN THE SEAMS RUN PERPENDICULAR TO THE DECK FLUTES
4. 10" WIDE TPO PRESSURE-SENSITIVE RMS CAN BE USED BENEATH FIELD OR PERIMETER SHEETS IN LIEU OF FASTENERS AND PLATES INSTALLED THROUGH THE MEMBRANE.
5. USE ADDITIONAL 4' WIDE HALF SHEETS INSTALLED WITH SEAMS RUNNING PERPENDICULAR TO THE DECK FLUTES TO MEET OR SLIGHTLY EXCEED FM PERIMETER DIMENSION REQUIREMENTS AS OUTLINED IN NOTE 2 ABOVE. EACH 4' WIDE HALF SHEET EQUATES TO APPROXIMATELY 3'-6" OF COVERAGE FACTORING IN THE REQUIRED OVERLAP.

REFER TO MULE-HIDE TECHNICAL BULLETIN #TPO-MA02-2006 FOR PERIMETER HALF SHEET REQUIREMENTS



**MULE-HIDE
PRODUCTS CO., INC.**

**FM CORNER / PERIMETER
FASTENING ENHANCEMENTS - OPTION A**
SYSTEMS:
**TPO MECHANICALLY ATTACHED
USING 8' WIDE FIELD SHEETS**

DETAIL NO.:
MHT-FM-308A
REVISION DATE: 01/2013