

NOTES:

1. DETAILS TO BE USED IN CONJUNCTION WITH STANDARD GUIDE SPECIFICATIONS CONTAINING REQUIREMENTS FOR NAILERS, INSULATION, SLIPSHEETS, ETC.

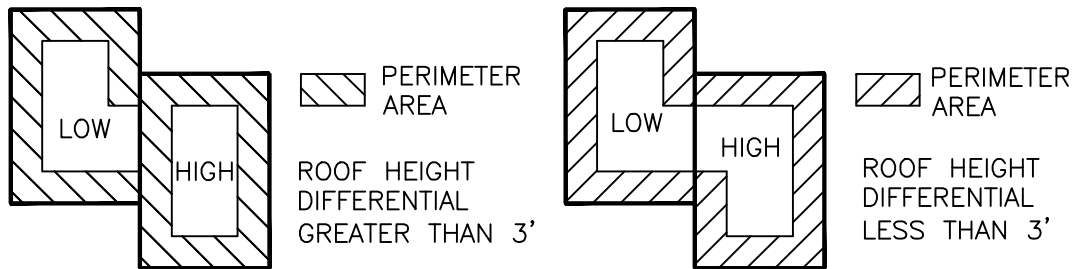
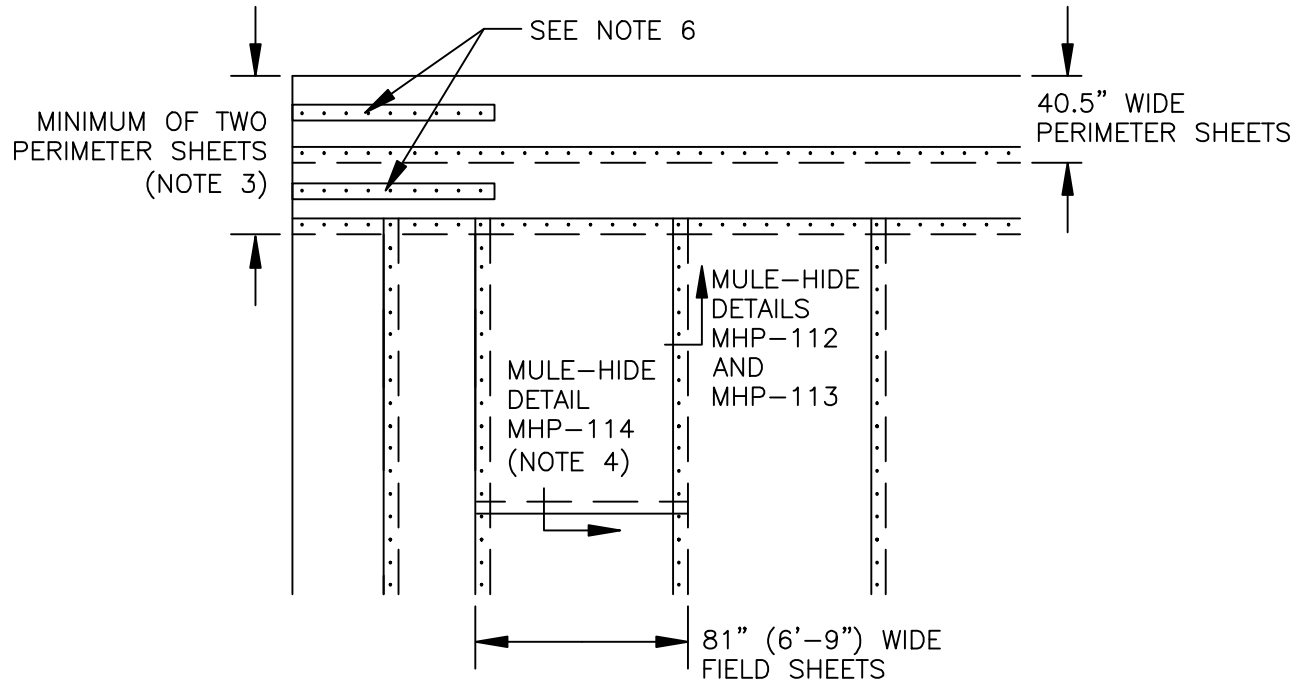
2. PVC EDGE SEALANT IS REQUIRED ON ALL CUT OR NON-ENCAPSULATED EDGES OF REINFORCED MEMBRANE. THIS INCLUDES FACTORY CUT MEMBRANE.

3. REFER TO SPECIFICATIONS FOR REQUIRED NUMBER OF PERIMETER SHEETS AND MEMBRANE FASTENING.

4. SECUREMENT NOT REQUIRED AT END ROLL SECTIONS; OVERLAP MEMBRANE 2" TO 3". REFER TO MULE-HIDE DETAIL MHP-110.

5. FOR INSULATION SECUREMENT, REFER TO MULE-HIDE DETAIL MHP-206.

6. MEMBRANE ATTACHMENT IN CORNERS MUST BE INCREASED ABOVE PERIMETER ATTACHMENT REQUIREMENTS TO COMPENSATE FOR THE HIGHER UPLIFT PRESSURES PRESENT AT BUILDING CORNERS.



**MULE-HIDE
PRODUCTS CO., INC.
04/01/2007**

**MEMBRANE SECUREMENT
SYSTEMS:
MECHANICALLY FASTENED PVC**

**DETAIL NO:
MHP-186**