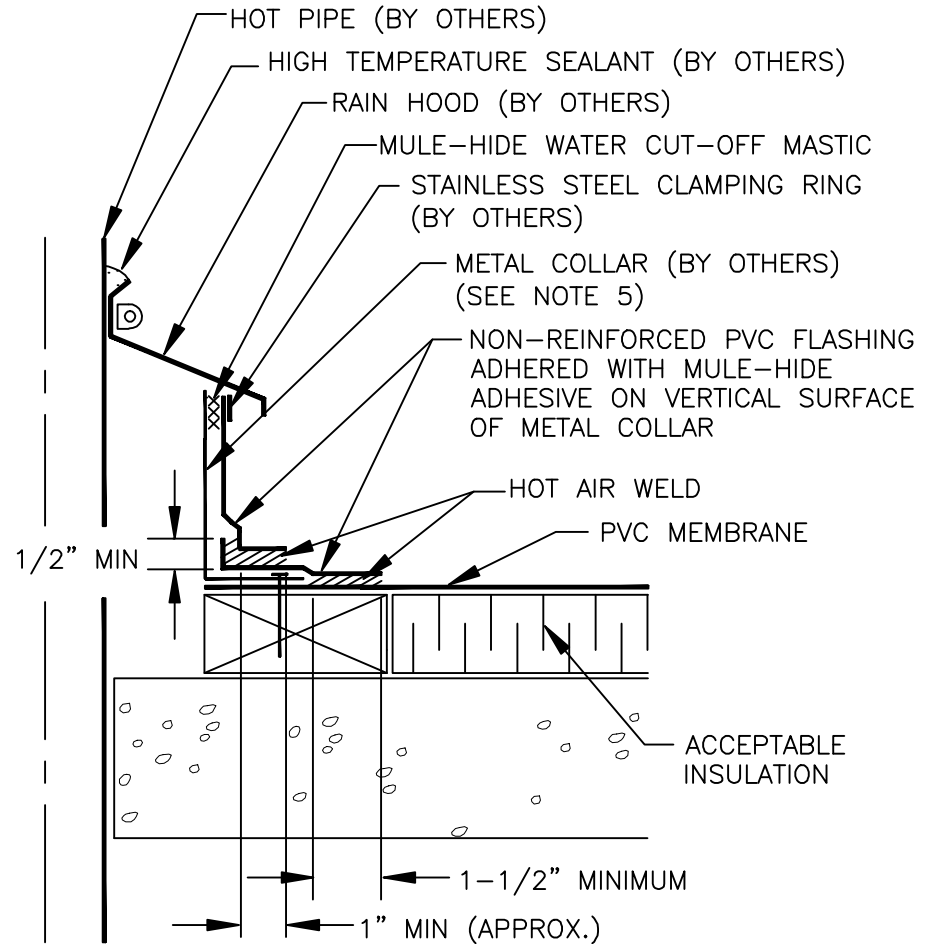
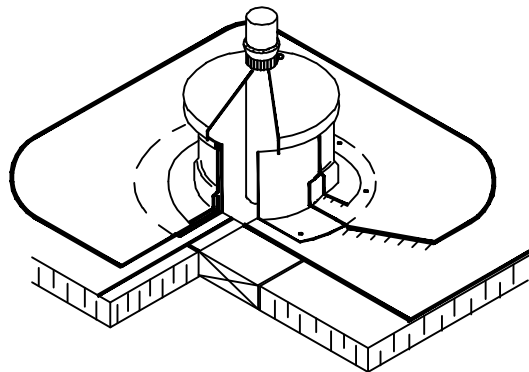


NOTES:

1. DETAILS TO BE USED IN CONJUNCTION WITH STANDARD GUIDE SPECIFICATIONS CONTAINING REQUIREMENTS FOR NAILERS, INSULATION, SLIPSHEETS, ETC.
2. PVC EDGE SEALANT IS REQUIRED ON ALL CUT OR NON-ENCAPSULATED EDGES OF REINFORCED MEMBRANE. THIS INCLUDES FACTORY CUT MEMBRANE.
3. FIELD-FABRICATED PIPE SEAL FOR USE WITH HOT PIPE, 120° F OR HOTTER.
4. NON-REINFORCED MEMBRANE WRAPPED AROUND PIPE SHALL HAVE MINIMUM 1-1/2" VERTICAL HOT AIR WELD.
5. TEMPERATURE OF METAL COLLAR MUST NOT EXCEED 120° F.



APPLY HEAT TO FLASHING AND FORM BY HAND PRIOR TO HOT AIR WELDING

**MULE-HIDE
PRODUCTS CO., INC.
04/01/2007**

**FIELD FABRICATED HOT PIPE
SYSTEMS:
ALL PVC**

**DETAIL NO:
MHP-142**