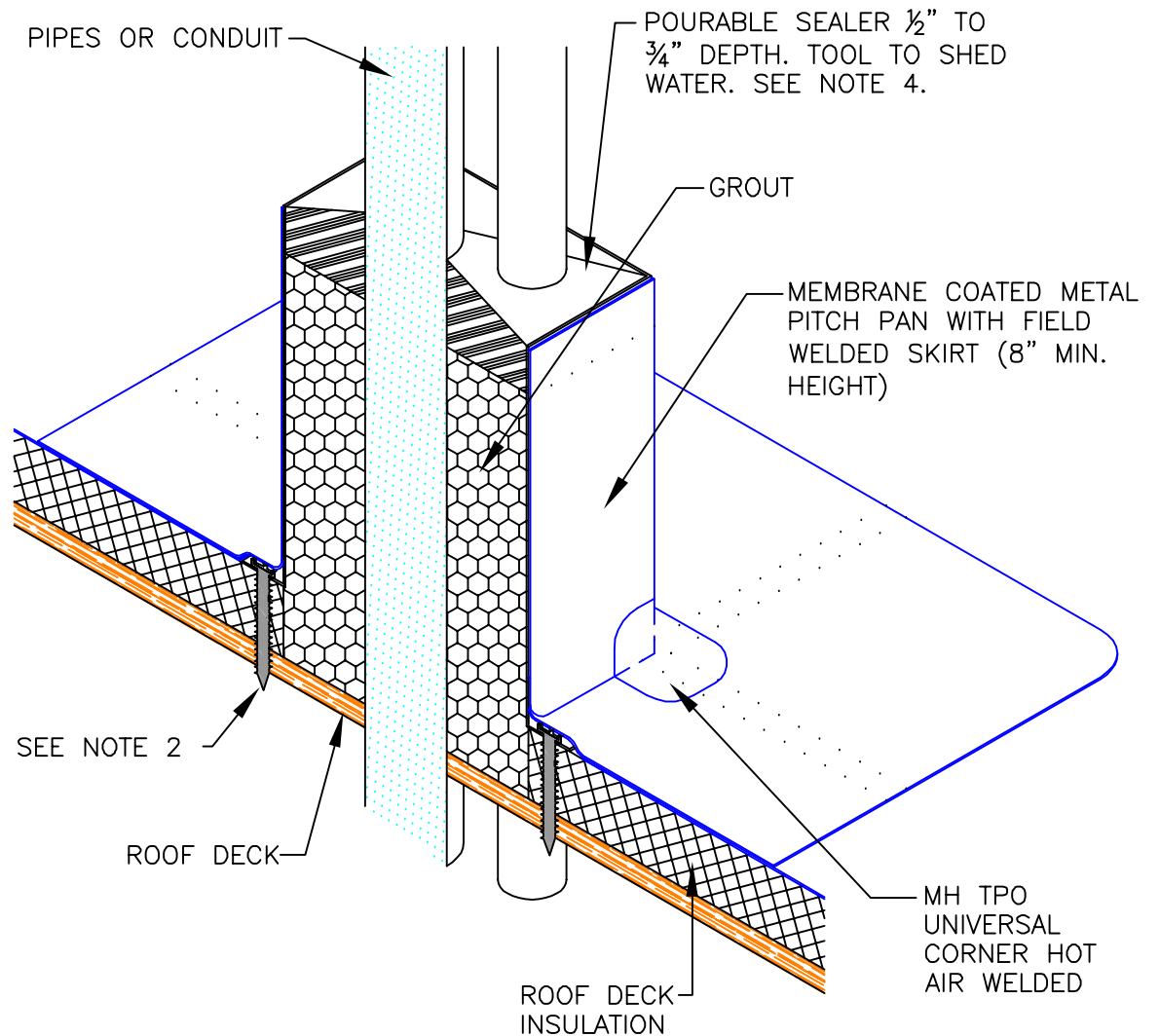


NOTES:

1. WATER MUST NOT BE ALLOWED TO POND WITHIN THE PITCH POCKET. BE SURE THAT THE POURABLE SEALER IS LEVEL WITH THE TOP OF THE PITCH PAN.
2. PITCH PAN MUST BE FASTENED 6" ON CENTER IN FLANGE WITH APPROVED FASTENERS, (1 PER SIDE MIN.).
3. PIPES OR CONDUIT MUST HAVE A MINIMUM 1" CLEARANCE BETWEEN OBJECTS OR THE EDGE OF THE PAN.
4. APPLY TAPE PRIMER TO INSIDE OF PITCH PAN AND OUTSIDE OF SURFACE OF PROJECTION(S) PRIOR FILLING WITH POURABLE SEALER.

NOTE:

THIS DETAIL QUALIFIES TO BE INCLUDED IN ANY MULE-HIDE LABOR AND MATERIAL WARRANTY



**MULE-HIDE
PRODUCTS CO., INC.**

**MULE-HIDE PREMANUFACTURED
MEMBRANE COATED METAL PITCH PAN
SYSTEMS:**

ALL TPO SYSTEMS

DETAIL NO.:

MHT-4045

REVISION DATE: 01/2013