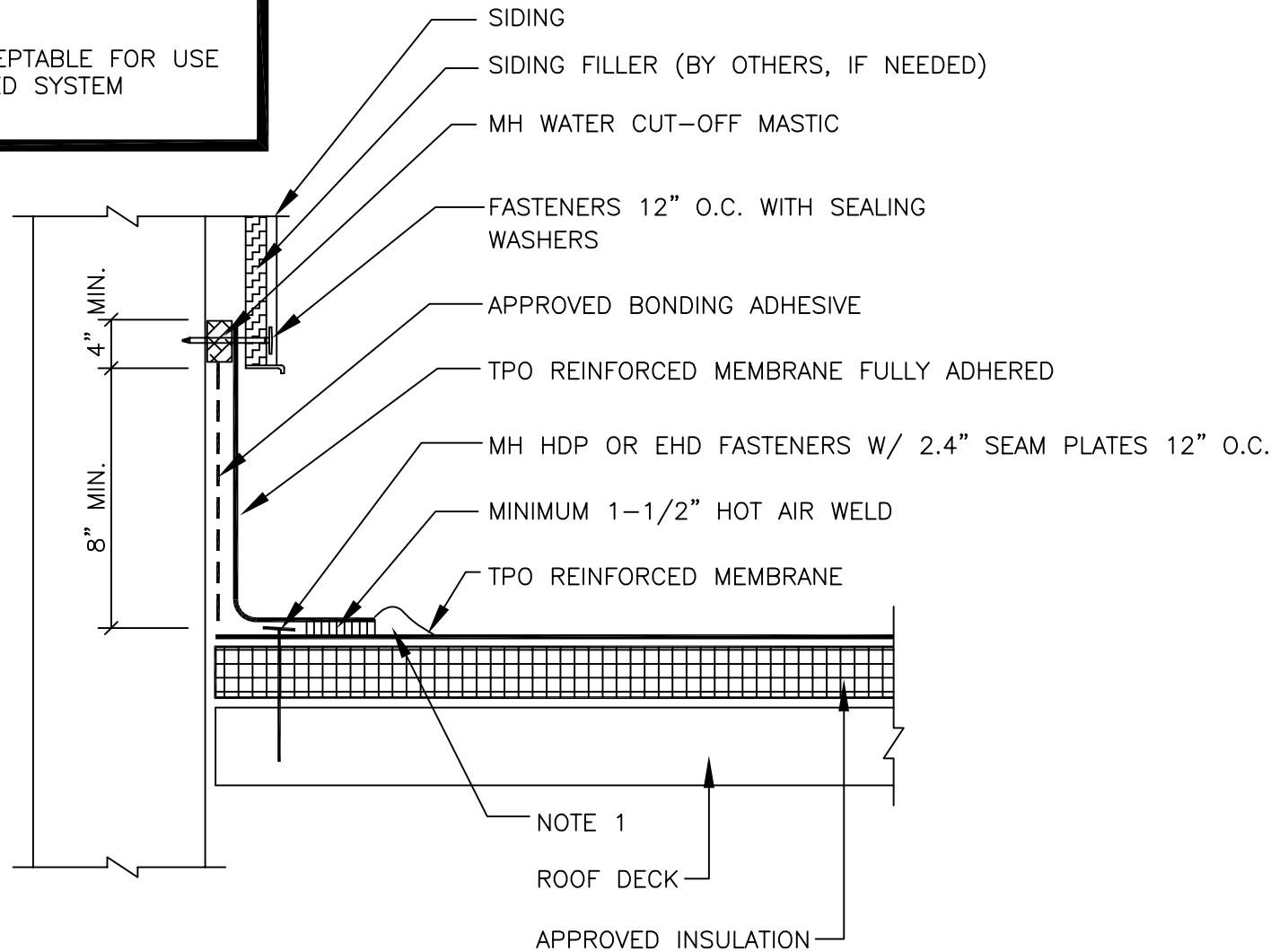


NOTE:

THIS DETAIL IS NOT ACCEPTABLE FOR USE
IN A 20-YEAR WARRANTED SYSTEM



NOTES:

1. APPROXIMATELY $\frac{1}{8}$ " DIAMETER BEAD OF CUT-EDGE SEALANT IS REQUIRED ON CUT EDGES OF TPO REINFORCED MEMBRANE.

**MULE-HIDE
PRODUCTS CO., INC.**

**BASE FLASHING
AT SIDING
SYSTEMS:
ALL TPO SYSTEMS**

DETAIL NO.:
MHT-UN-311
REVISION DATE: 10/2013