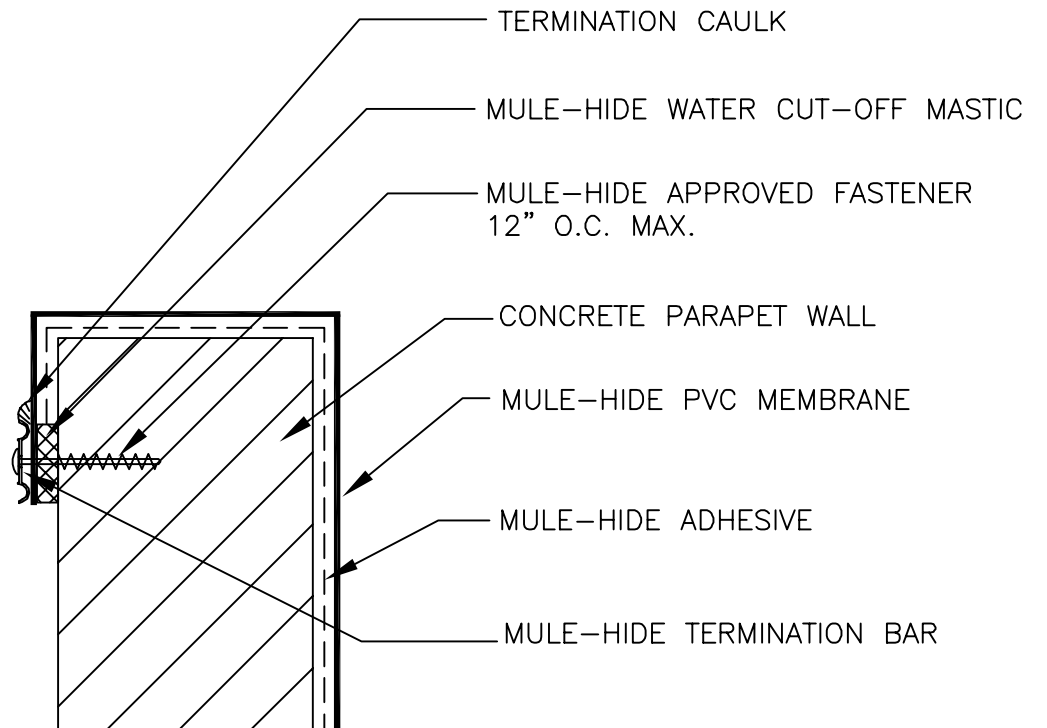


NOTES:

1. DETAILS TO BE USED IN CONJUNCTION WITH STANDARD GUIDE SPECIFICATIONS CONTAINING REQUIREMENTS FOR NAILERS, INSULATION, SLIPSHEETS, ETC.

2. PVC EDGE SEALANT IS REQUIRED ON ALL CUT OR NON-ENCAPSULATED EDGES OF REINFORCED MEMBRANE. THIS INCLUDES FACTORY CUT MEMBRANE.

3. MEMBRANE TO EXTEND OUTTO OUTSIDE FACE OF WALL MINIMUM OF 2" TO PREVENT SPALLING OF CONCRETE WHILE DRILLING.



**MULE-HIDE
PRODUCTS CO., INC.
04/01/2007**

**CONCRETE PARAPET WALL
WITH TERMINATION BAR**

SYSTEMS:

ALL PVC

**DETAIL NO:
MHP-176**